

# 46503 Fetterly Place, Chilliwack

\$899,000



Home is Where the Heart is! This lovely well maintained family home is perfect for the growing family. Located at the end of a quiet cul-de-sac this home offers an unobstructed view of the mountains. New fencing, underground sprinklers, and private deck. Basement is ideal for a home based business. Open house Sunday, June 19th, 12-2pm.

## KEY INFORMATION

MLS® R2692743

Residential Detached

Chilliwack

4 Bedrooms

2 Bathrooms

1,956 SF

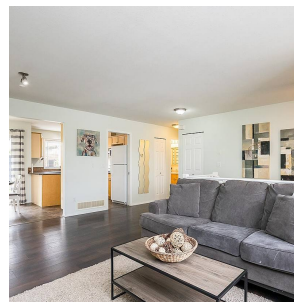
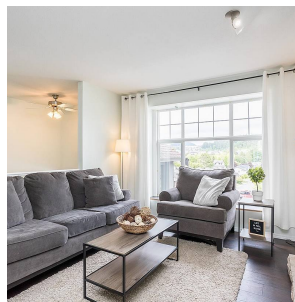
4,791 SF Lot

## FEATURES

Year Built: 2004

Views: Mountain

Listed By: RE/MAX Aldercenter Realty



rennie