

112 240 Mahon Avenue, North Vancouver

\$530,000



Welcome to this bright, south facing unit only steps away from Lonsdale Quay at the Seadale place complex! This home offers updated kitchen and bathroom and laminate flooring. Features include bright living room a large dining area with built in office nook perfect for a home office or study area. Bedroom is bright and spacious with ample closet space. This building has been well maintained with updates including brand new envelope, new windows, roof, siding, fencing, & landscaping in 2017. Central location just steps to convenience stores, buses, cafes, shops and restaurants, as well as Waterfront Park and Spirit Trail are just a few minutes walk. Book your showing now before you miss out!

KEY INFORMATION

MLS® R2693901

Residential Attached

Lower Lonsdale

1 Bedroom

1 Bathroom

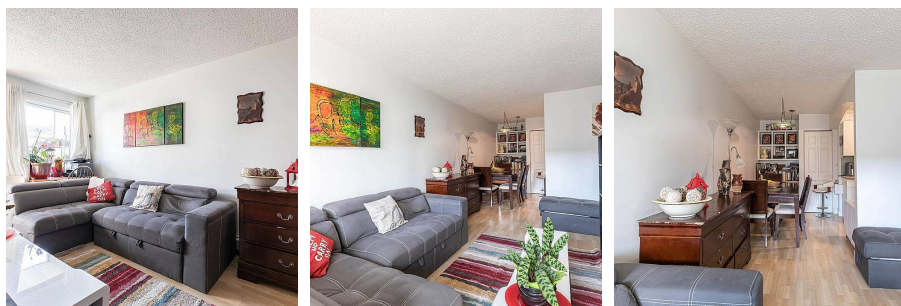
615 SF

\$332.29 Maintenance Fees

FEATURES

Year Built: 1980

Listed By: Royal LePage Sussex



rennie