

# 35200 Mccorkell Drive, Abbotsford

\$1,249,000



Welcome to this spacious EAST ABBOTSFORD 2 story with basement family home!! This over 3000 sq ft home offers spectacular VIEWS from windows to enjoys Mt. Baker & the valley. This home features 3 bedrooms on the top floor with beautiful updated bathroom with refinished tubs. along with a spacious bright master bedroom with 3pc ensuite offering great views from the rooms. Main floor features a south facing well appointed kitchen looking onto the valley. Enjoy large spacious family and living rooms for your family get togethers. This walk out basement offer plenty of potential along with a nicely finished bathroom, separate entry and a 4th bedroom. Configure the space as possible mortgage helper or use as a fam rec room meanwhile having access to the 9660 sq ft lot. Open Sunday 1 - 3

## KEY INFORMATION

MLS® R2694110

Residential Detached

Abbotsford East

4 Bedrooms

4 Bathrooms

3,074 SF

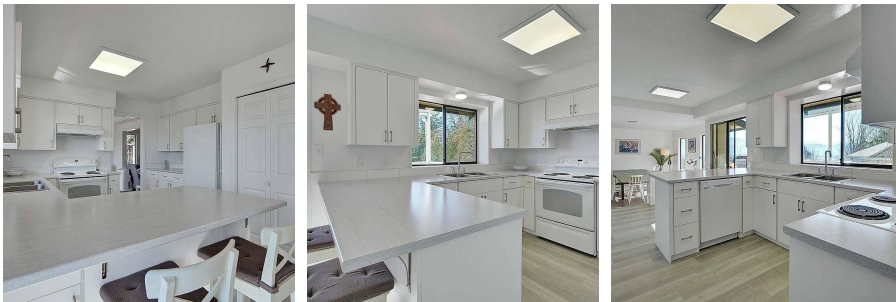
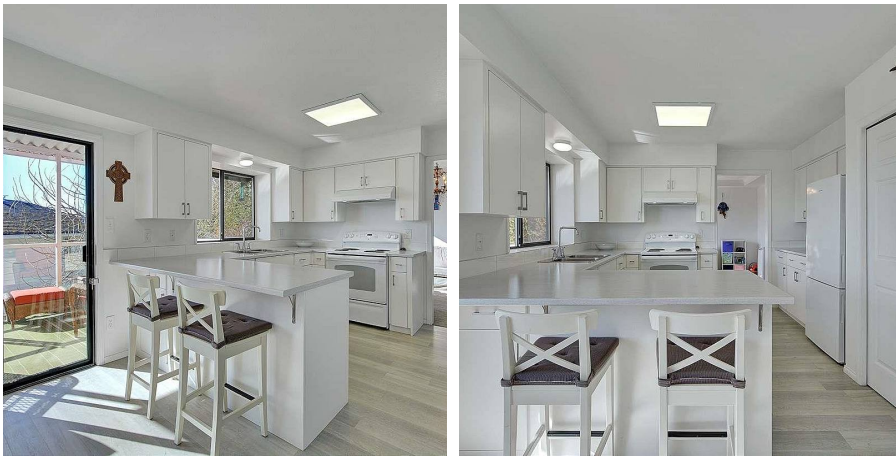
9,668 SF Lot

## FEATURES

Year Built: 1985

Views: Mountains & Valley

Listed By: Royal LePage West Real Estate Services



rennie