

101 33731 Marshall Road, Abbotsford

\$399,000



Attn: UPSIZERS and DOWNSIZERS! This 1306 SqFt, 2 bedroom, 2 bathroom condo feels like a HOUSE! This CORNER UNIT features two very large bedrooms, dining and living rooms that can easily accommodate FULL SIZED house furniture, LAMINATE FLOORING throughout, & lots of windows that provide plenty of NATURAL LIGHT. The tastefully UPDATED KITCHEN features almost new S/S appliances, a DOUBLE BOWL composite sink, and plenty of COUNTER SPACE and PANTRY storage. Centrally located close to shopping and restaurants, less than 5min drive to Abbotsford Hospital & Walmart Supercentre, 10min to COSTCO & the SUMAS BORDER Crossing, as well as easy access to Hwy 1. 19+ building, includes PARKING and STORAGE. Come on by: OPEN HOUSE Saturday, June 25th 2-4pm

KEY INFORMATION

MLS® R2694604

Residential Attached

Central Abbotsford

2 Bedrooms

2 Bathrooms

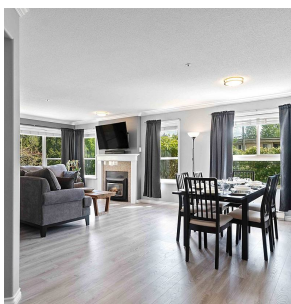
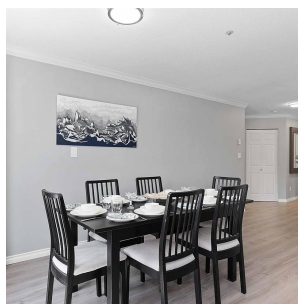
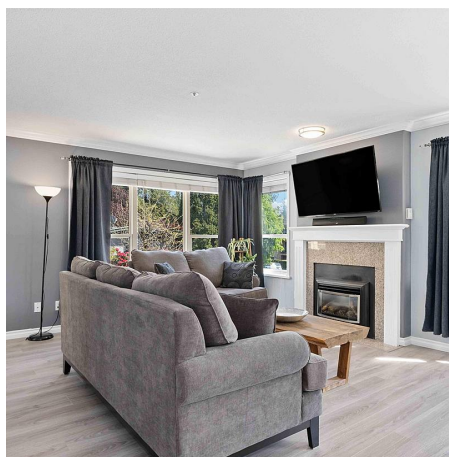
1,306 SF

\$461.50 Maintenance Fees

FEATURES

Year Built: 1994

Listed By: RE/MAX Crest Realty



rennie