

2408 7388 Kingsway, Burnaby

\$858,000



Quality-Built Kings Crossing I by Cressey. Modern concrete tower with Air conditioning. Spacious 850 Sq Ft unit with a big balcony and unobstructed breathtaking city view. This 2 bedroom, 2 bathroom with high end finishes include modern Cressey kitchen design with double door refrigerator & wine fridge, pull out pantry, 5-burner gas cooktop, Fulgor built-in oven, Double sink bathroom. Luxury amenities include basketball court, gym, lounge, gardens, outdoor theatre. Walking distance to Skytrain, shopping centres, restaurants, community Center, library and all level schools. Nearby to Deer Lake and Burnaby Lake parks. 8-min drive to Metrotown, 30-min to downtown. Great location for both living and investing. OPEN HOUSE by appointment: JUNE 19(SUN), 3-4PM.

KEY INFORMATION

MLS® R2694609

Residential Attached

Edmonds

2 Bedrooms

2 Bathrooms

850 SF

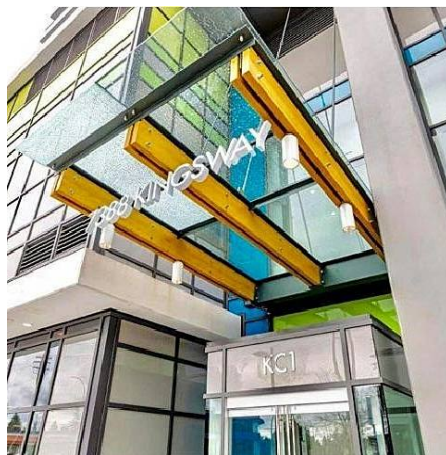
\$395.14 Maintenance Fees

FEATURES

Year Built: 2020

Views: Fraser River & Mountains

Listed By: Coldwell Banker Prestige Realty



rennie