

411 8115 121a Street, Surrey

\$599,000



THE CROSSING (ONE STREET UP TO THE SURREY SIDE BY SCOTT ROAD) this home is everything you could want in a condo! Open Layout with granite countertops, crown mouldings, laminate floors, double ensuite shower, two large bedrooms. There are two underground gated parking spots. Very quiet top floor in the well-admired building by visitors. Special features: granite kitchen and bathroom tops, vaulted LR ceiling, skylight, soaker tub, open kitchen, crown moulding, bright kitchen cabinets plus skylight. Secure 2 parking stalls storage, five appliances, pets allowed with restrictions. Walking distance to school, bus, numerous stores/business. Won't last long.

KEY INFORMATION

MLS® R2693795

Residential Attached

Queen Mary Park

2 Bedrooms

2 Bathrooms

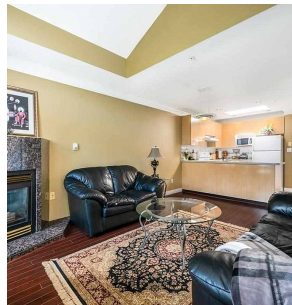
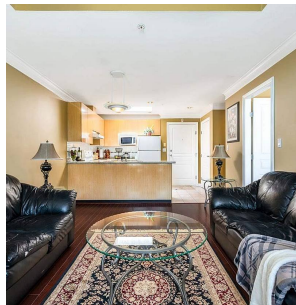
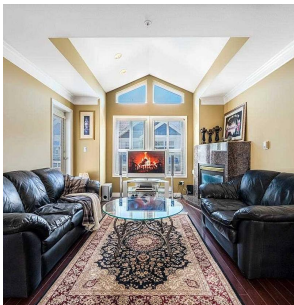
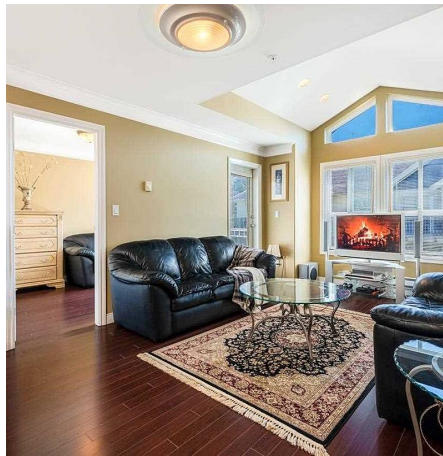
856 SF

\$321.75 Maintenance Fees

FEATURES

Year Built: 1999

Listed By: Century 21 Coastal Realty Ltd.



rennie