

# 2855 Mountview Street, Abbotsford

\$1,599,900



Welcome to this beautiful family home in a quiet neighborhood in the center of Abbotsford. It features 7 bedrooms with 5 bathrooms and a legal suite on a 1/4 acre lot. Double car garage with oversize driveway, RV parking/shed with 30 amp power, 220v power hook up in the backyard workshop. Large deck with natural gas hook up and a huge fenced backyard. Please call for a private tour today.

## KEY INFORMATION

MLS® R2694186

Residential Detached

Central Abbotsford

7 Bedrooms

5 Bathrooms

3,673 SF

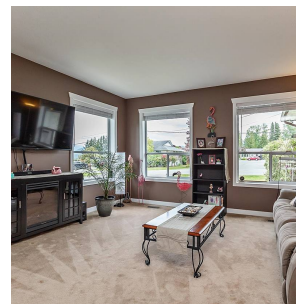
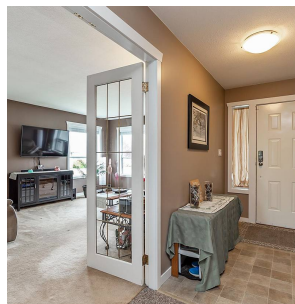
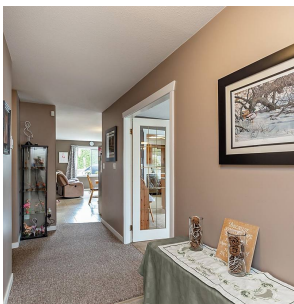
10,759 SF Lot

## FEATURES

Year Built: 1986

Views: Mountains

Listed By: Sutton Group-West Coast Realty (Abbotsford)



rennie