

# 13059 63a Avenue, Surrey

\$1,595,000



Basement entry home sitting on huge 7,104 Sq Ft lot located in Panorama Ridge. This lovely 5 bedroom/ 2 bath home features back lane access providing ample parking. Finished ground level spacious basement features 2 bedroom mortgage helper. Main floor boasts large living room with gas fireplace, dining room, lots of light through big windows, large kitchen features recent upgraded stainless steel appliances w/gas stove overlooking large covered sundeck. Fully fenced backyard. Live, rent while you plan to build your Dream Home in the future.

## KEY INFORMATION

MLS® R2694871

Residential Detached

Panorama Ridge

5 Bedrooms

3 Bathrooms

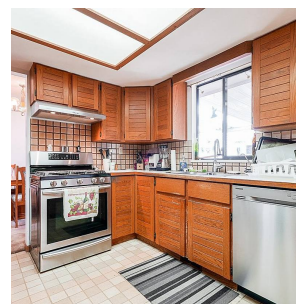
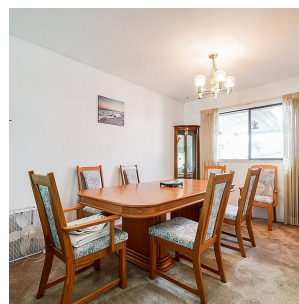
3,153 SF

7,104 SF Lot

## FEATURES

Year Built: 1984

Listed By: Sutton Premier Realty



rennie