

115 13919 Fraser Highway, Surrey

\$675,000



Modern 2BR 2BTH City Centre condo. Downtown-style home seamlessly combining form & function. Prepare gourmet meals in your open kitchen featuring soft-close cabinets, stainless steel appliances, polished quartz counters & breakfast bar overlooking sizable living room leading to a private, covered balcony. Both bedrooms offer mirrored closets with spa-like master ensuite boasting a double vanity & glass-enclosed shower highlighted by crisp, porcelain tile. Enjoy fabulous amenities at Verve's Club Red including nice size gym, billiards, darts, a guest suite, lounge & patio with a BBQ. Perfect for first-time buyers or students, you will be steps to King George Skytrain, Central City Shopping, Surrey Memorial Hospital, SFU & every desirable urban convenience.

KEY INFORMATION

MLS® R2695582

Residential Attached

Whalley

2 Bedrooms

2 Bathrooms

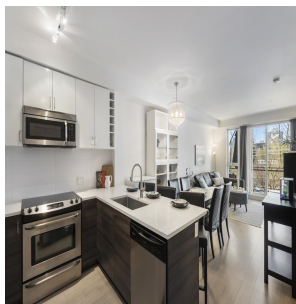
905 SF

\$317.80 Maintenance Fees

FEATURES

Year Built: 2015

Listed By: RE/MAX 2000 Realty



rennie