

1009 530 Whiting Way, Coquitlam

\$579,000



Welcome to Brookmere, a concrete high-rise built by Onni. Located in the heart of the City of Lougheed Shopping Center nearby two supermarkets, banks, gourmet restaurants and sky train expo line & Millennium line This west-face bright 1 Bed condo offers excellent floor plan, 30" KitchenAid appliances, quartz stone central island, whirlpool full size wash & dryer. 1 EV Parking stall and 1 storage locker included. Building amenities include concierge, recreation center, playground, guest suite, games room. Excellent for investor and home buyer. See for yourself! <https://youtu.be/zCNYokdzakc>

KEY INFORMATION

MLS® R2695677

Residential Attached

Coquitlam West

1 Bedroom

1 Bathroom

540 SF

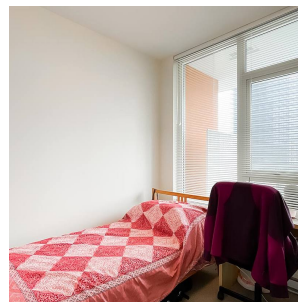
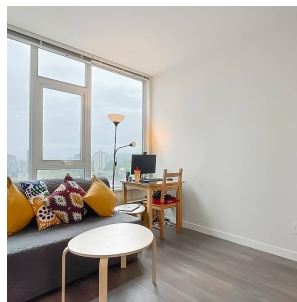
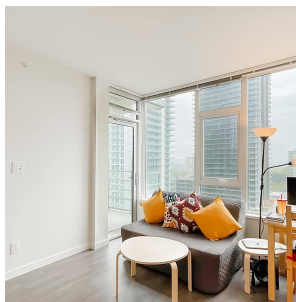
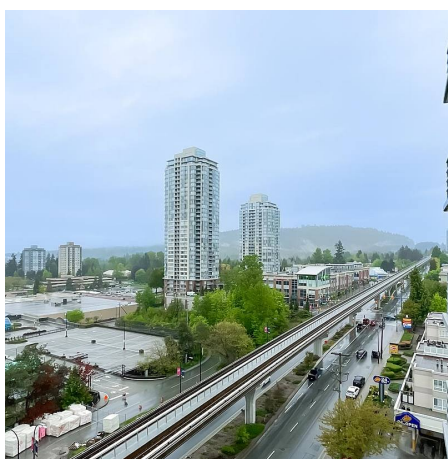
\$226.03 Maintenance Fees

FEATURES

Year Built: 2019

Views: CITY

Listed By: Pacific Evergreen Realty Ltd.



rennie