

# 607 8871 Lansdowne Road, Richmond

\$530,000



Call it home at this private, bright and spacious SE facing corner unit. Unbeatable location with short walking distance to Canada Line station, Lansdowne mall, parks and restaurants. Very convenient yet tucked away from the busy streets. Well maintained building with many recent upgrades: lobby renovation, new elevator, complete re-piping and exterior painting. Nice amenities including exercise room, outdoor pool, sauna, game room and guest suite. Low monthly strata fees. Updated kitchen and bathroom. Newer ceramic tiles and bamboo flooring. One open parking stall (#39C) and one storage locker (#89-A3) included. Pet restrictions: No pet dogs. Maximum two cats allowed.

## KEY INFORMATION

MLS® R2695701

Residential Attached

Brighthouse

1 Bedroom

1 Bathroom

732 SF

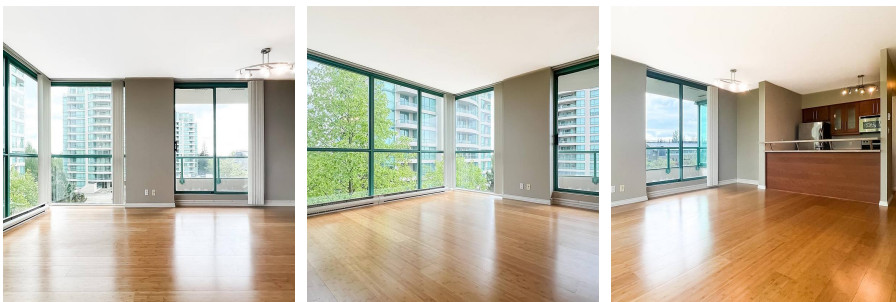
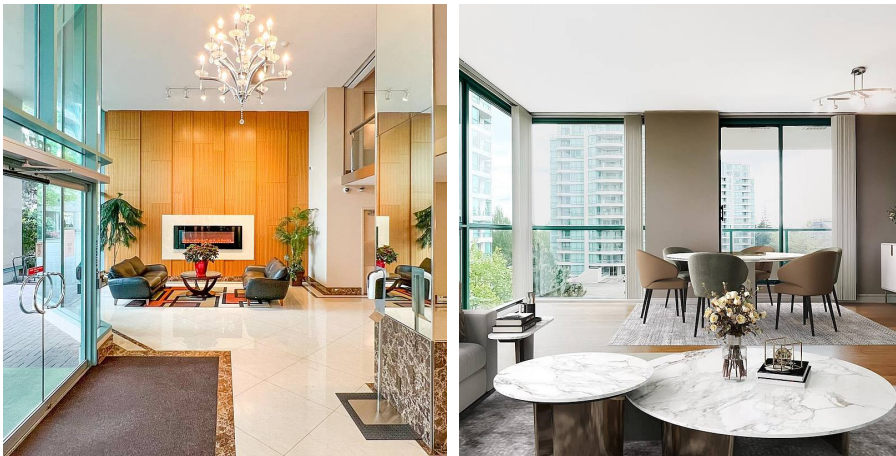
\$202.26 Maintenance Fees

## FEATURES

Year Built: 1995

Views: City View

Listed By: Homeland Realty



rennie