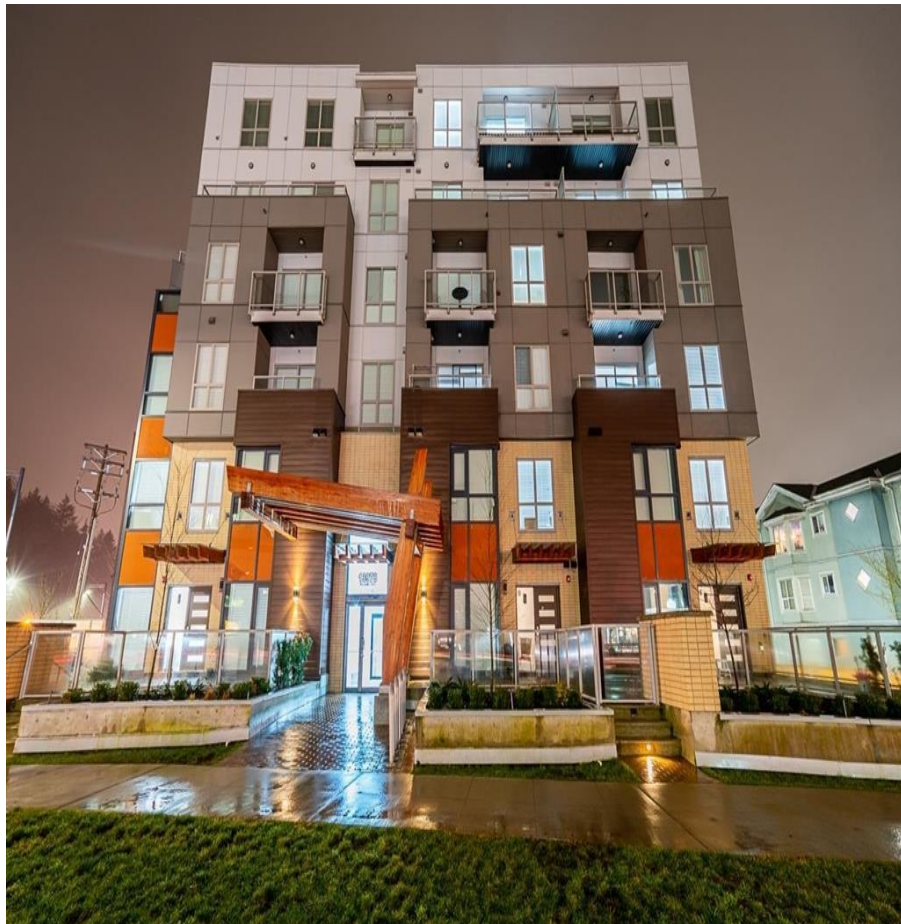


# 103 9689 140 Street, Surrey

\$799,888



Welcome to Fraser Landmark, strategically placed in Surrey's Downtown District! This is One Year old 3 bedroom and Den on Main floor. Two story home is perfect for the growing family with 1449 sqft of living space and separate 200 sq.ft Patio on Main. Complete with a beautiful modern kitchen fitted with stainless steel appliances and a gas stove. Upper Floor has 3 bdrms and Master Bedroom boast 16' ceilings along with 4 piece master ensuite. The main floor steps onto a spacious outdoor patio with easy access to the street for your daily strolls. Only a short walking distance to skytrain, parks, playgrounds, community centres, Universities and Surrey Central Mall. This townhome is a landmark to all your convenient needs.

## KEY INFORMATION

MLS® R2695714

Residential Attached

Whalley

3 Bedrooms

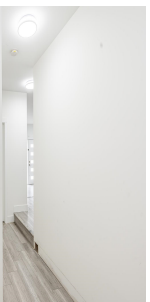
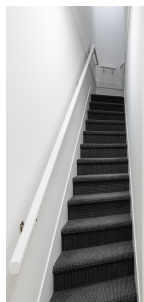
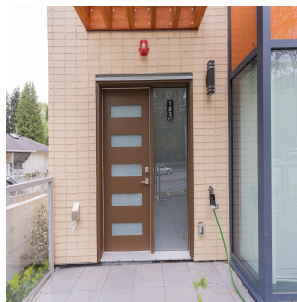
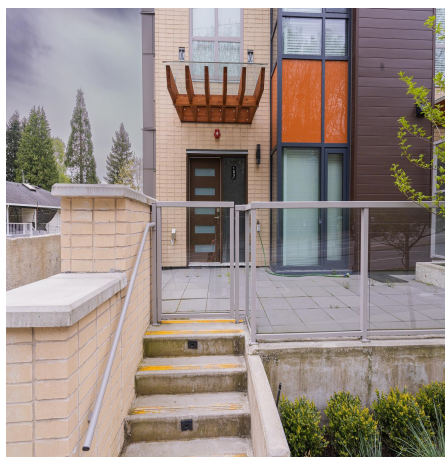
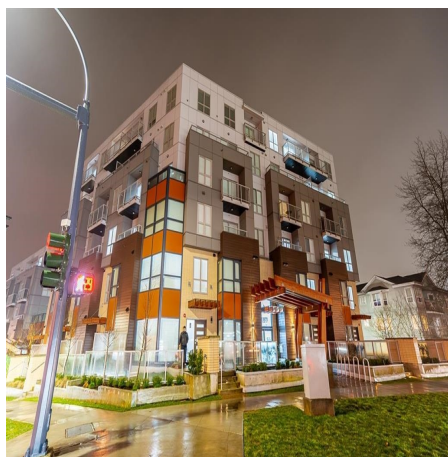
3 Bathrooms

1,449 SF

## FEATURES

Year Built: 2020

Listed By: RE/MAX City Realty



rennie