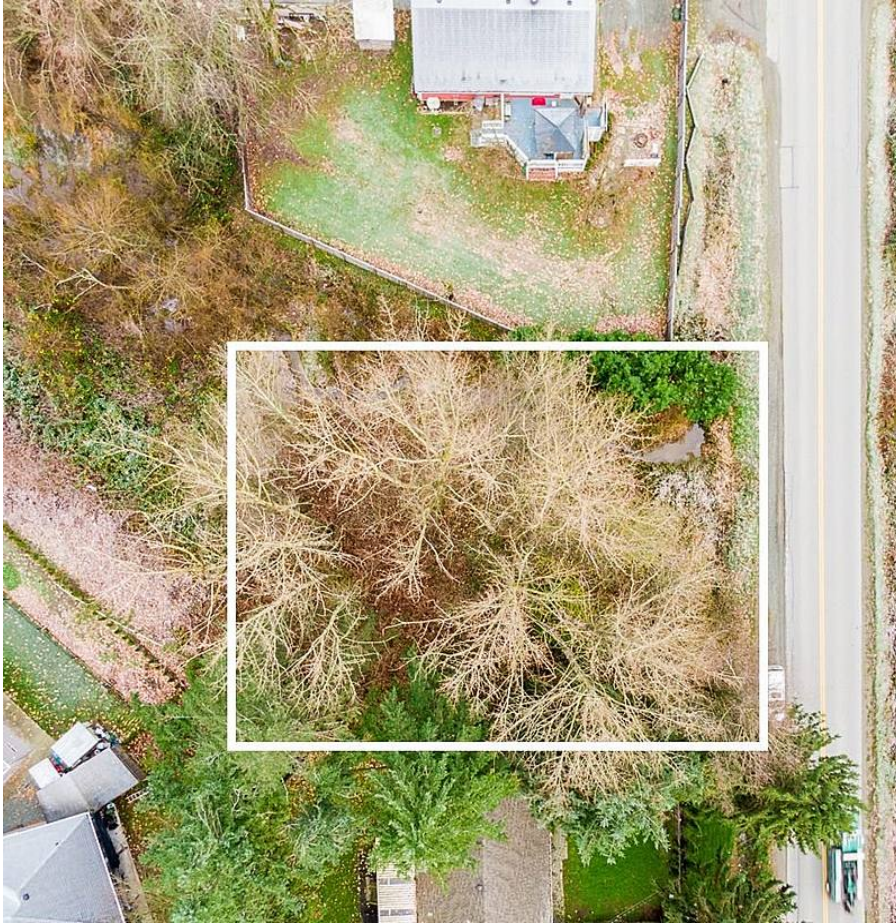


# 3157 Lefeuvre Road, Abbotsford

\$749,000



Hidden Gem! Creekside 10,181 sq/ft lot with large 85ft frontage. DEVELOPMENT PERMIT & TREE REMOVAL PERMIT ISSUED! Buy today and start tomorrow! This property is great for someone looking to build their dream home on a spacious lot, nestled beside a small creek, which would make for beautiful landscaping! Selectively clear to your liking. Approved for a moderately-sized home, with possible basement (check with city). Great location minutes from downtown Aldergrove with quick access to Fraser Hwy, 16th Ave and HWY 1.

## KEY INFORMATION

MLS® R2695187

Land Only

Aberdeen

0 Bedrooms

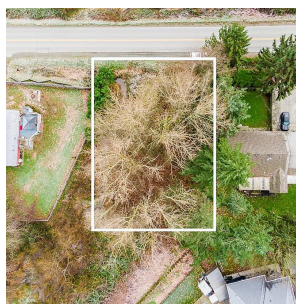
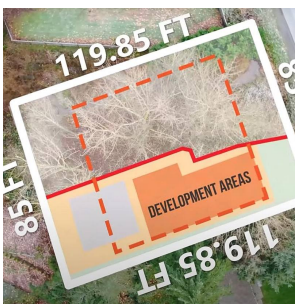
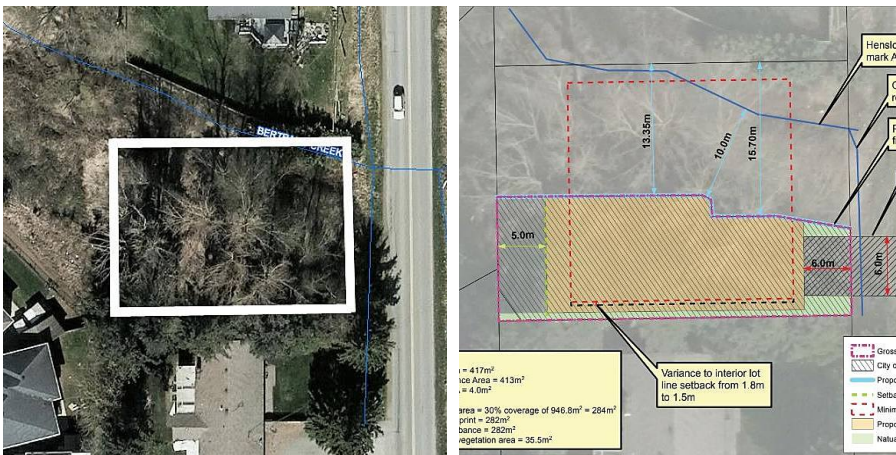
0 Bathrooms

0 SF

10,181 SF Lot

## FEATURES

Listed By: B.C. Farm & Ranch Realty Corp.



rennie