

11810 207 Street, Maple Ridge

\$2,281,240



ALERT to developers, builders and investors!!!
Centrally located, elementary and secondary schools, shopping, transit, athletic park all within walking distance. Current zoning is RS-1 and future potential for medium density multifamily apartment building up to 2.5 FSR . Check with City Hall. Pls follow COVID-19 PROTOCOL. MUST SEE this land assembly of 1.2 Acre (52000 sqft) and asking price is \$17M !!!

KEY INFORMATION

MLS® R2696202

Residential Detached

Southwest Maple Ridge

2 Bedrooms

1 Bathroom

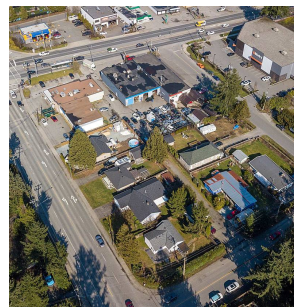
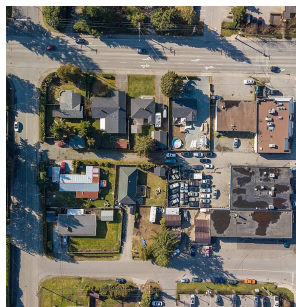
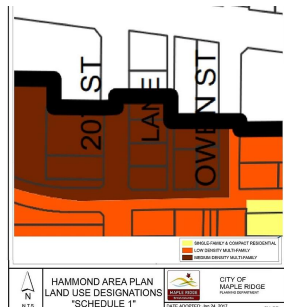
905 SF

6,955 SF Lot

FEATURES

Year Built: 1946

Listed By: Homelife Benchmark Realty (Langley) Corp.



rennie