

1556 E 11th Avenue, Vancouver

\$1,699,000



This duplex lot is located on a tree-lined street, south-facing backyard with lane access. A great neighbourhood close to shops & restaurants, one block to Commercial Drive. 2 blocks from Skytrain station, Trout Lake, schools, and just about everything! It consists of two furnished 2 bed/1 bath suites with a 1 bedroom basement suite. Open house: 11 Jun (Sat) 2-4PM, 12 Jun 2-4PM (Sun)

KEY INFORMATION

MLS® R2696471

Residential Detached

Grandview Woodland

6 Bedrooms

3 Bathrooms

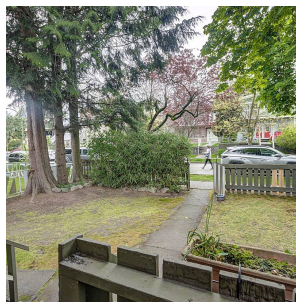
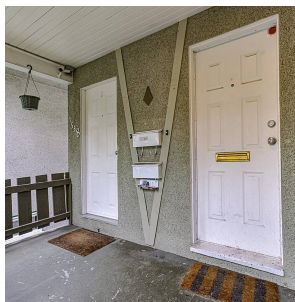
2,251 SF

4,191 SF Lot

FEATURES

Year Built: 1910

Listed By: Sutton Group - 1st West Realty



rennie