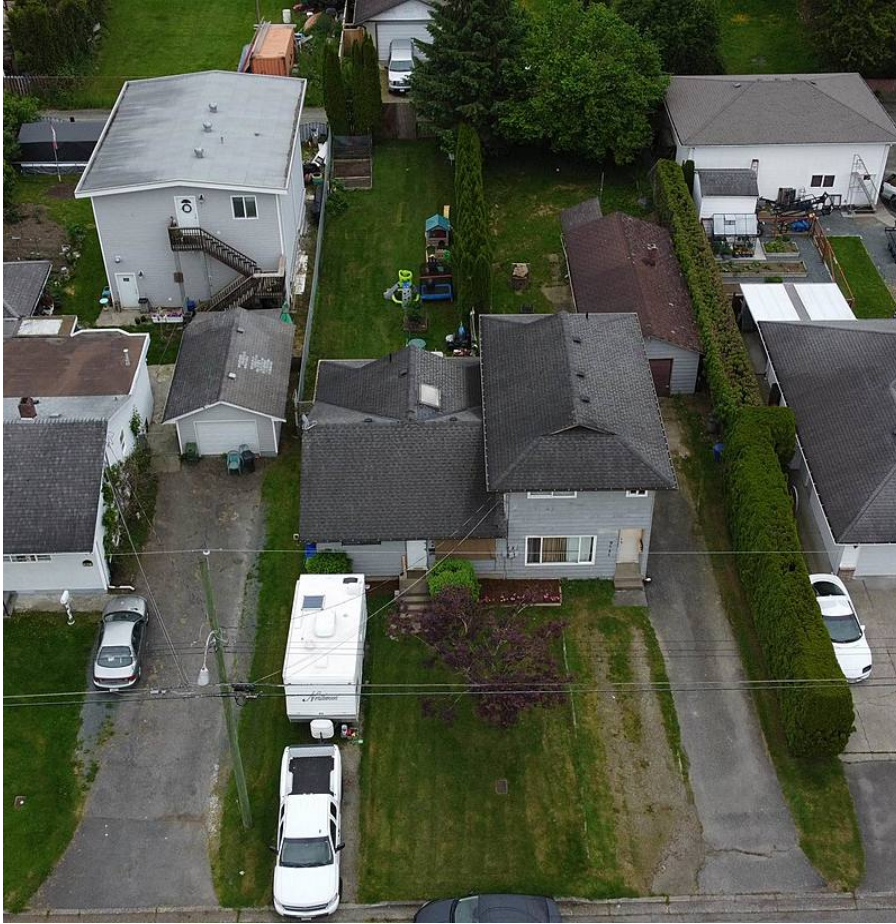


9644 Coote Street, Chilliwack

\$1,398,000



Discover one of the best opportunities in Chilliwack! A duplex lot for sale. This massive lot awaits a developer, investor or homeowner; available for quick possession with great tenants. Boasting 10454 Sq Ft, the front of the house is 66 feet and runs deep at 163 feet. The addition of a back lane makes the property extremely desirable. The most unique feature of this home is that Coote Park is right across the street in a quiet residential area. In the vicinity are 5 public catchment schools as well as a Catholic school along with additional private schools. The community area offers 4 playgrounds and 4 tennis courts all within a 20 min walk. Street transit stops are less than a 3 min walk away and rail transit is less than 3 km away.

KEY INFORMATION

MLS® R2695842

Multifamily

Chilliwack

6 Bedrooms

3 Bathrooms

2,000 SF

10,758 SF Lot

FEATURES

Year Built: 9999

Views: View of Park

Listed By: Oneflatfee.ca

rennie