

36550 E Auguston Parkway, Abbotsford

\$1,390,000



Ticks off every box! Best spot in AUGUSTON, this home backs on to a greenbelt with no homes in front offering peace and privacy. Open and functional design for entertaining a large family. Bright kitchen, wide open great rm. overlooking a private park like backyard oasis. 3 large beds upstairs and flex-room with murphy bed to maximize options. Downstairs - beautiful NEW suite with quality workmanship & unique design. Huge LR, gorgeous kitchen and island with gas stove. Large master with ensuite and beautiful office space to work from home. Bonus extra bathroom with multi purp, room that has space for guests. No expense spared extra insulation between suite and main floor. Gas bbq hookups, 2 sheds, extra wide driveway, best schools. Pride of Ownership shows in every detail. Too much to list. Come take a look!

KEY INFORMATION

MLS® R2696909

Residential Detached

Abbotsford East

4 Bedrooms

5 Bathrooms

3,342 SF

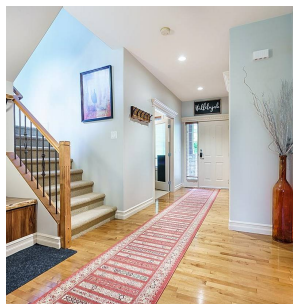
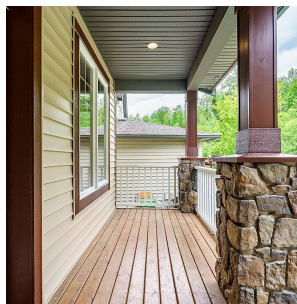
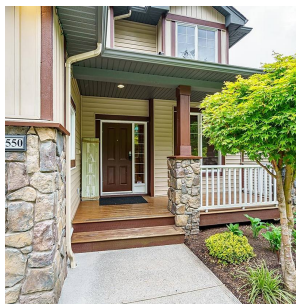
6,846 SF Lot

FEATURES

Year Built: 2005

Views: GREENBELT FRONT AND BACK

Listed By: Team 3000 Realty Ltd.



rennie