

3001 1408 Strathmore Mews, Vancouver

\$1,629,000



Welcome to gorgeous 2 Bedroom + Den unit in West One by Concord Pacific. Enjoy unobstructed view of water, park, city and Mt. Banker from this beautiful unit and open balcony. Just steps from the seawalls, George Wainborn Park & water taxi to Granville Island & a short walk to the heart of Yaletown or English Bay. Exclusive access to one of the best amenities, Club VIVA with 80 ft Indoor pool, whirlpool, 2 squash courts, 2 theatres & more. 24 hr concierge. 2 Parking stall included.

KEY INFORMATION

MLS® R2697227

Residential Attached

Yaletown

2 Bedrooms

2 Bathrooms

1,052 SF

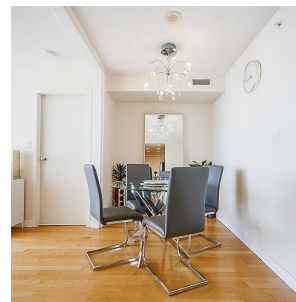
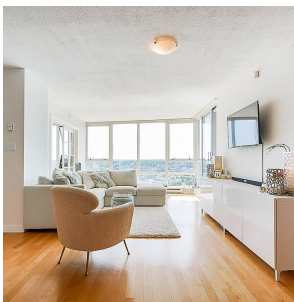
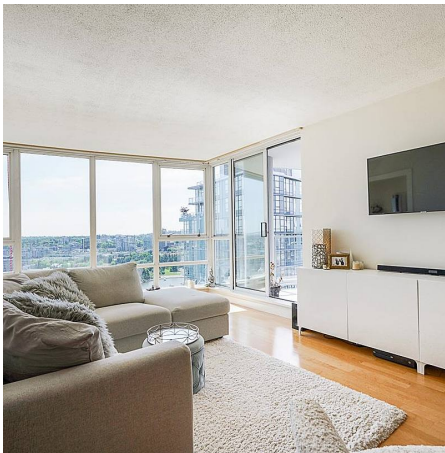
\$605.71 Maintenance Fees

FEATURES

Year Built: 2002

Views: CITY AND OCEAN

Listed By: rennie & associates realty ltd.



Charlie Kim PREC*
604.767.1531
ckim@rennie.com
rennie.com/charliekim

rennie