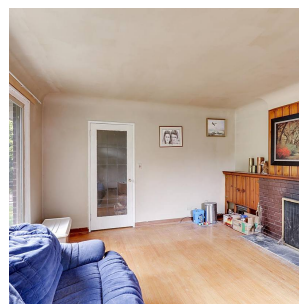
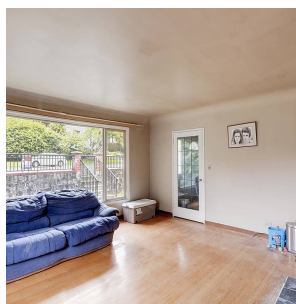
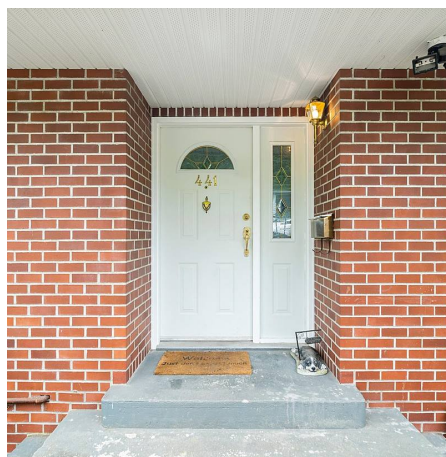


# 441 Tempe Crescent, North Vancouver

\$1,575,000



Bring your renovation ideas to this 'diamond in the rough' on Tempe hill. Original 2-lvl house w/ a recent Penfolds roof (2020), upgraded double pane windows, & new hot water tank (2021). Situated on a south facing CNV lot w/ lane access & private treed outlook to Tempe Heights Park. The home offers 3 bdrms, 2 baths, & 2,035 sq/ft including a studio suite. The main floor has been expanded over the years to 1,175 sq/ft and features a spacious living room with hardwood floors, coved ceilings, wood fp, and adjacent open plan kitchen & dining rm. Completing the main are 3 bdrms. Down is partially finished and offers a studio suite w/ separate entrance. Situated on a 6,480 sq/ft south facing lot w/ coach house potential (confirm w/ CNV). On a quiet Upper Lonsdale street close to all amenities

## KEY INFORMATION

MLS® R2697307

Residential Detached

Upper Lonsdale

3 Bedrooms

2 Bathrooms

2,035 SF

6,480 SF Lot

## FEATURES

Year Built: 1949

Views: Tempe Heights Park

Listed By: RE/MAX Rossetti Realty

rennie