

214 33538 Marshall Road, Abbotsford

\$550,000



Welcome to The Crossing! This fabulous two bedroom, two bathroom home features an open kitchen with stainless steel appliances and granite countertops, spacious living and dining rooms, plus a perfect nook/office space, and a large sundeck. Overlooking the courtyard, this home is private and on the quiet side of the building. Both bedrooms are a great size and each have large closets and ensuite bathrooms. The Crossing is an outstanding building offering easy access to Hwy 1, McCallum Junction, gym, party room, plus this home comes with two parking stalls and a storage locker! Total peace of mind here in this well built, newer building. Ideal for first time home buyers looking to move in themselves, or as an investor with a fantastic tenant already in place.

KEY INFORMATION

MLS® R2697387

Residential Attached

Central Abbotsford

2 Bedrooms

2 Bathrooms

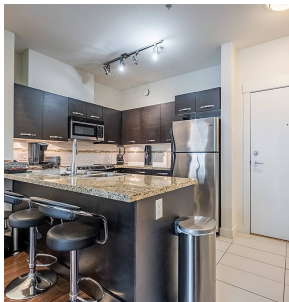
886 SF

\$341.50 Maintenance Fees

FEATURES

Year Built: 2009

Listed By: Stilhavn Real Estate Services



rennie