

# 18021 70 Avenue, Surrey

\$999,999



Welcome to your new home on Provincetown Park! NO STRATA FEES! This beautiful 2124 SQ foot 4 bedroom and 3.5 bathroom home has it all! Great open concept floorplan on the main that boasts dining and living room combo(gas fireplace), powder rm and spacious kitchen with lots of counter space and access to your backyard. Upstairs has 3 bedrooms and two bathrooms, all a great size for your growing family! Basement has huge rec room with bar fridge and cabinets, bedroom with its own full bathroom, laundry and storage. Nice sized backyard with artificial turf, perfect for entertaining and for the kids to play. 2 PARKING at back and lots of street parking. Unbeatable location close to highways, school, shopping, transit, restaurants and lots more. Feels like a detached home. MUST SEE!

## KEY INFORMATION

MLS® R2697424

Residential Attached

Cloverdale

4 Bedrooms

4 Bathrooms

2,124 SF

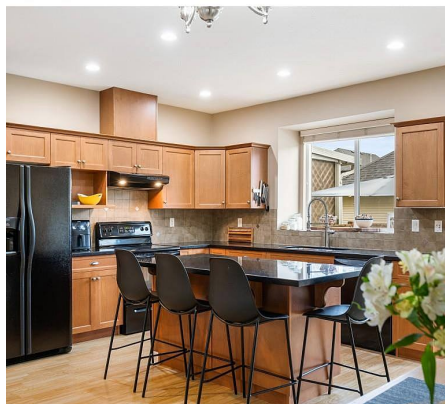
2,002 SF Lot

## FEATURES

Year Built: 2007

Views: PARK

Listed By: Sutton Group Seafair Realty



rennie