

# 248 Tye Drive, West Vancouver

\$239,000



Your cozy home awaits in the Capilano Mobile Home Park. The location can't be beat! Walk to Park Royal Shopping or Ambleside Beach. Only 10 minutes drive to Downtown Vancouver. Charming, easy care landscaping with lovely outlooks from every window and a private back garden area. The vaulted ceiling in the entrance & dining room creates a spacious feeling that opens to the kitchen and office area. A lovely bay window has been added to the bright living room. Hot water tank and roof have been replaced in the last few years. This one bedroom & den could be easily converted back to 2 bedrooms if desired. This immaculate home has been lovingly maintained. Must be 55+ to live here. Monthly pad rental of \$865 includes cable. Small pet ok. No rentals. No financing available.

## KEY INFORMATION

MLS® R2697436

Residential Detached

Park Royal

1 Bedroom

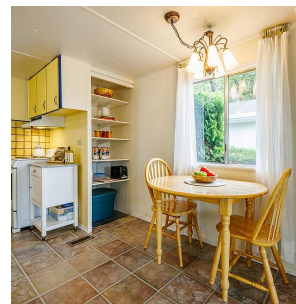
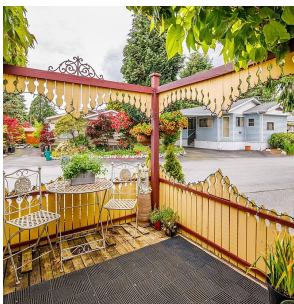
1 Bathroom

903 SF

## FEATURES

Year Built: 1965

Listed By: RE/MAX Masters Realty



rennie