

3325 Cardinal Drive, Burnaby

\$1,999,000



Builders, Investors, Alert. Prime Government Road location 90 x 112 Level Lot on quiet street, located within the new Bainbridge Urban Village re-development plan. Duplexes, triplexes and fourplexes are very likelky in the near future. Please check with Burnaby Planning Department. Solid home currently rented month to month.

KEY INFORMATION

MLS® R2697458

Residential Detached

Government Road

3 Bedrooms

3 Bathrooms

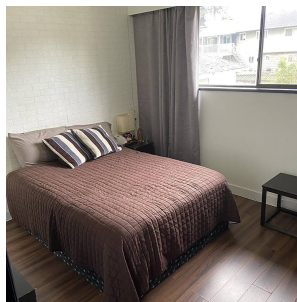
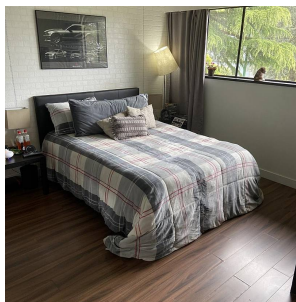
2,438 SF

10,080 SF Lot

FEATURES

Year Built: 1971

Listed By: Sutton Group-West Coast Realty



rennie