

304 9981 Whalley Boulevard, Surrey

\$639,900



Welcome to Park Place 2 by Concord Pacific. This building is centrally located just a short walk to Skytrain, Central City, SFU and KPU Campuses and more! This Large South East facing corner 2 bedroom, 2 bathroom unit features an open concept floor plan, galley style kitchen with quartz counters and stainless steel appliances, separated bedrooms, and laminate flooring throughout. As well, the natural light that comes in from the floor to ceiling windows is a bonus. Building amenities include a Bowling Alley, concierge, fitness centre, games room, and theatre. Parking included. Open Sunday June 26 2-4.

KEY INFORMATION

MLS® R2697585

Residential Attached

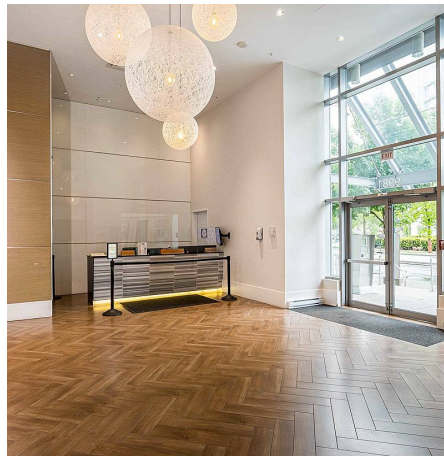
Whalley

2 Bedrooms

2 Bathrooms

907 SF

\$482.89 Maintenance Fees



FEATURES

Year Built: 2011

Listed By: Oakwyn Realty Downtown Ltd.



rennie