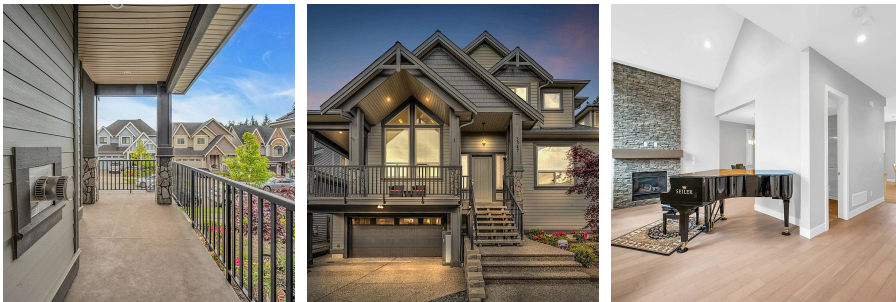


3347 Palisade Place, Coquitlam

\$2,328,000



Stunning custom-designed home conveniently located in a very quiet neighborhood of sought after Burke Mountain. Quality built in 2016 with a welcoming south facing front yard and porch. The lovely backyard with privacy is great for garden and patio lovers. This nearly new home offers a functional layout with over height vaulted ceiling, finely crafted cabinetry, spice kitchen with spacious pantry, rarely used appliances, gorgeous lighting fixtures, air conditioning, side by side garage with extra depth, and plenty of sunshine. Basement includes a great mortgage helper of a two bedroom legal suite (currently tenanted with month to month). Easy access to schools, transit, community centre, and Coquitlam Centre. Open Houses: July 2/3, Sat/Sun 2-4pm.

KEY INFORMATION

MLS® R2697646

Residential Detached

Burke Mountain

7 Bedrooms

5 Bathrooms

3,924 SF

4,503 SF Lot

FEATURES

Year Built: 2016

Views: partial valley views

Listed By: Unilife Realty Inc.

rennie