

21 22206 124th Avenue, Maple Ridge

\$899,000



Beautiful home in well cared for boutique "Copperstone Ridge" complex with only 29 units. Whistler inspired, close to schools, shops and parks & located on the West Side of Maple Ridge. This south facing bright and inspiring corner end unit offers real H/W Maple floors, 3 Beds and 2.5 baths. Open plan kitchen w/ stainless appliances, granite counter tops and updated cabinets. Spacious living, dining, and family room areas ,cozy gas F/P, balcony and private fenced back yard. Enjoy the lush landscaping w/ park like atmosphere. Tandem garage, ample storage and amazing floor plan. Bring your family and pets. This home is ready for you! Easy to show by appointment

KEY INFORMATION

MLS® R2697639

Residential Attached

West Central

3 Bedrooms

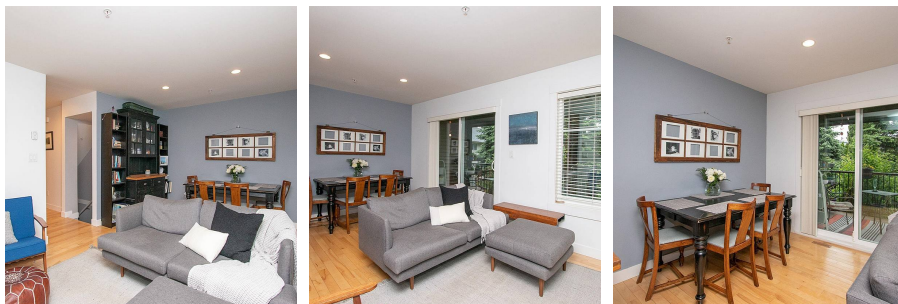
3 Bathrooms

1,417 SF

FEATURES

Year Built: 2008

Listed By: Sutton Group-West Coast Realty



rennie