

50951 Sophie Crescent, Chilliwack

\$1,448,800



BRAND NEW! PHASE 6 Underway!

Breathtaking view from this lovely home with 6 bedrooms, office, flex room, 4 bathrooms, 3450 sq ft - BONUS LEGAL SUITE, with separate electric meters & in suite laundry! Desirable quiet family orientated neighbourhood, Aspen Woods, located on the Eastern Hillside close to Hwy 1, schools, shops and trails. Quality finishing throughout this lovely BRAND NEW 2 storey with Walkout Basement, tranquil Mountain and Valley view. Open concept floor plan, engineered hardwood floors, quartz countertops, soft close cabinetry, outdoor deck/patio, landscaped yard! Come and call this amazing community Home!

KEY INFORMATION

MLS® R2697533

Residential Detached

Chilliwack

6 Bedrooms

4 Bathrooms

3,450 SF

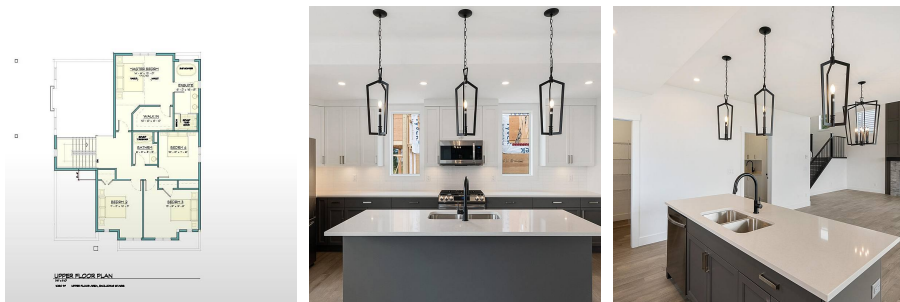
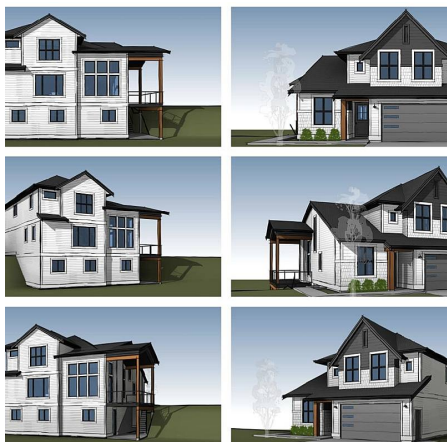
5,285 SF Lot

FEATURES

Year Built: 2022

Views: MOUNTAIN AND VALLEY VIEW

Listed By: HomeLife Advantage Realty Ltd



rennie