

108 3010 Riverbend Drive, Coquitlam

\$839,900



Nature lover's paradise! Come see this gorgeous end unit nestled into a premier location in Westwood by Mosaic homes. Sunny South facing backyard on lush greenspace ensures views out of the rear & side "wall of windows" are green & private -no neighbours to the West- except for the quiet community garden! Shows great inside w/ bright & open main 9' main floor and granite island kitchen, plus 2 generous bedrooms up. Large 2x tandem garage offers options- parking, storage & more. End of lane location is quiet low traffic "cul de sac". Visitor parking across the way too! Close to everywhere you need to be- transit, shopping, schools, recreation, and nature trails through to Coquitlam City Centre! Pet & family friendly w/ low mtce fees. View the Matterport Tour. OPEN HOUSE SUN JUNE 12 1-3PM.

KEY INFORMATION

MLS® R2697715

Residential Attached

Coquitlam East

2 Bedrooms

2 Bathrooms

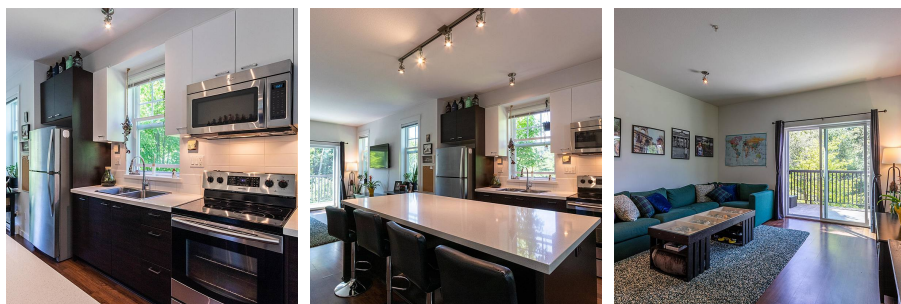
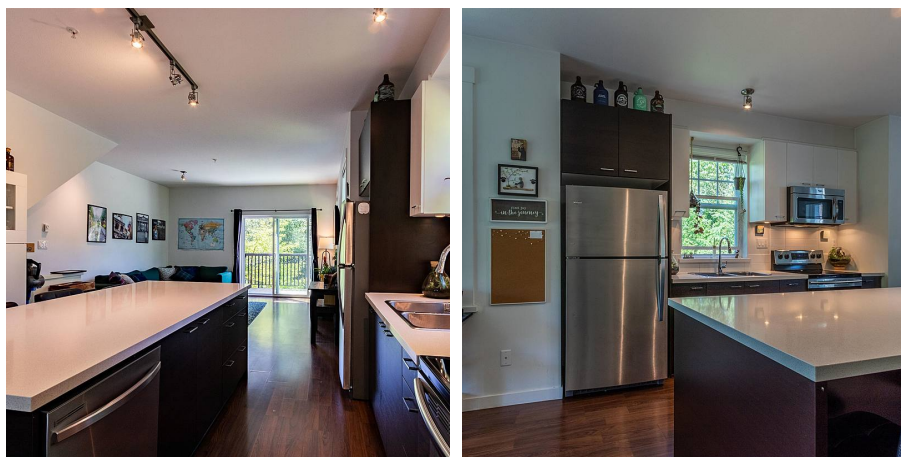
1,225 SF

FEATURES

Year Built: 2011

Views: Lush Greenbelt and garden

Listed By: 2 Percent Realty West Coast



rennie