

202 8733 160 Street, Surrey

\$430,000



Welcome to Manarola. Functional & open layout w/ large covered patio. Gourmet kitchen w/ quartz counters & stainless steel full-sized GE appliances. Cozy, well-appointed bathroom w/ exquisite tiling throughout. Extra wide gated underground parking stall. Secure large storage locker, bike room, visitor parking. 24/7 CCTV & secure fob entry for all levels. Perfectly located in the heart of Fleetwood. Tim Hortons, Boston Pizza, A&W, Starbucks, UPS, Fresh St. Market, Nanyang Market, TD, RBC, CIBC, BMO, library, pharmacy and clinic within 10 mins walk. Minutes away from the Surrey Leisure & Aquatic Centre, Guildford Town Centre, Save-on-food, T&T Supermarket, Superstore. Public and private elementary/ secondary schools nearby. 6 mins to HWY 1, steps from future skytrain. Rentals allowed.

KEY INFORMATION

MLS® R2697800

Residential Attached

Fleetwood Tynehead

1 Bedroom

1 Bathroom

508 SF

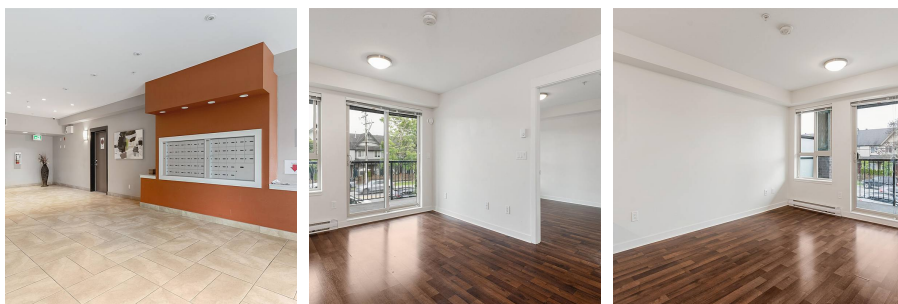
\$206.82 Maintenance Fees

FEATURES

Year Built: 2015

Views: City

Listed By: rennie & associates realty ltd.



Angus Ng
778.898.3386
ang@rennie.com
rennie.com/angusng

rennie