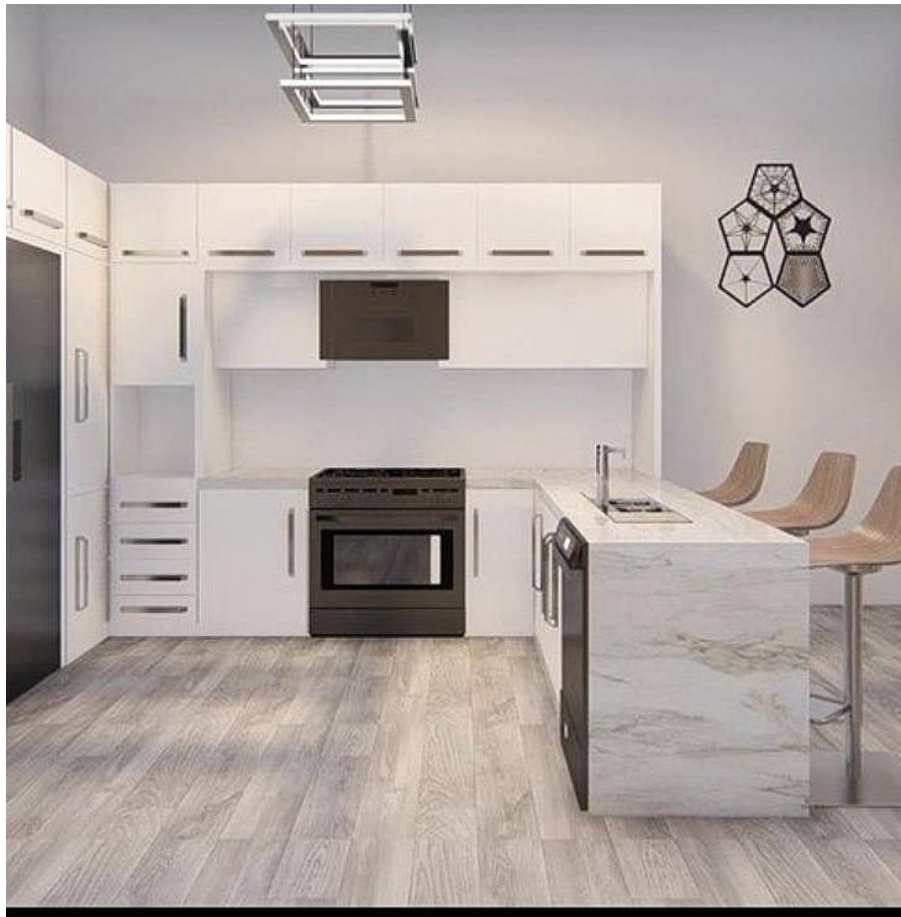


104 9450 Robson Street, Chilliwack

\$520,000



Perched on the border of Chilliwack's most historical and established neighborhoods, The Robson presents Sophisticated Urban Condo Living at it's best. Versatile floor plans provide ample space for a variety of personal styles and needs. Surround yourself with open concept designs, upscale finishes and designer accents, while experiencing the amenities and convenience of the new and revitalized lifestyle of Chilliwack's City Centre. Going above and beyond the building codes and integrating high-quality features and safety measures, The Robson alleviates your insurance worries. Standard features include stainless steel appliances, quartz counter tops throughout, high gloss cabinets, tiled tub/shower with frameless glass door and laminate flooring. Chilliwack is back, be a part of it at The Robson!

KEY INFORMATION

MLS® R2691389

Residential Attached

Chilliwack

2 Bedrooms

2 Bathrooms

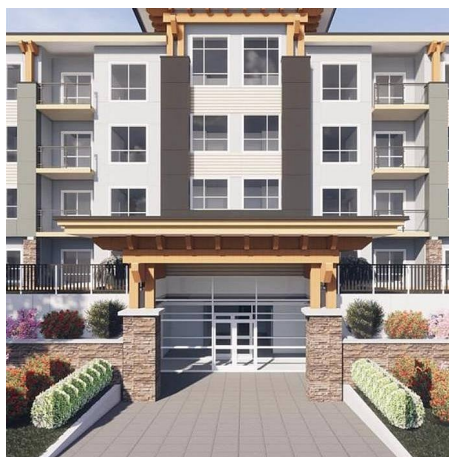
997 SF

\$282.00 Maintenance Fees

FEATURES

Year Built: 2022

Listed By: SRS Panorama Realty



rennie