

510 2465 Wilson Avenue, Port Coquitlam

\$799,900



Beautiful 982 sq. ft. 2-bedroom condo centrally located next to Gates Park is perfect! This home features laminate floors throughout the living area, 9' ceilings throughout. Kitchen boasts loads of dark shaker cabinets, granite countertops, tiled backsplash and Stainless Steel appliances including built-in microwave. Building amenities include an exercise centre, guest suite & more! Walking distance to schools; shopping; transit; restaurants; coffee shops; and Library. Also includes 2 parking stalls and a bike locker! No rental restrictions, Pet friendly (2 Dogs or 2 Cats), Backing onto a GREENSPACE right next to MAPLE STREET DOG PARK!! No Smoking Building, Call for a private showing!

KEY INFORMATION

MLS® R2696130

Residential Attached

Central Port Coquitlam

2 Bedrooms

2 Bathrooms

982 SF

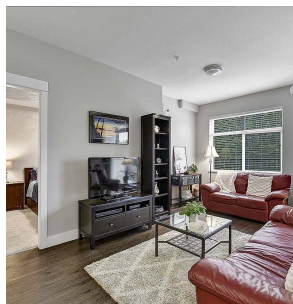
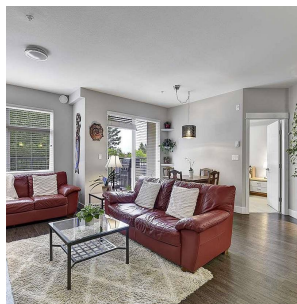
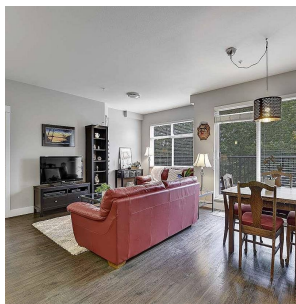
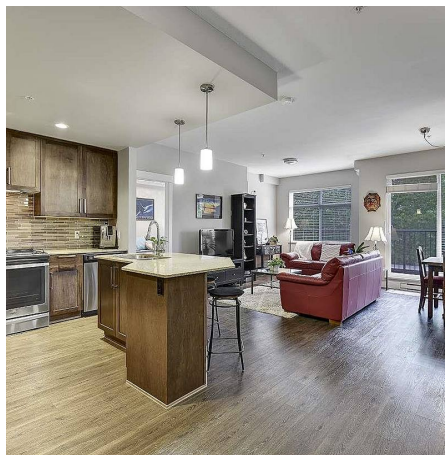
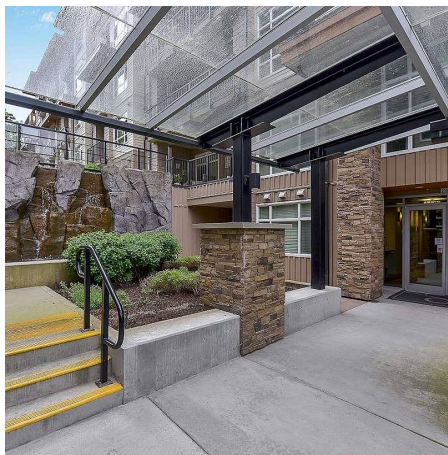
\$445.99 Maintenance Fees

FEATURES

Year Built: 2017

Views: River and Park

Listed By: RE/MAX 2000 Realty



rennie