

2501 Panorama Drive, North Vancouver

\$1,998,000



One-of-a-kind, semi-waterfront west coast contemporary home peacefully nestled into a forest setting, steps to Deep Cove Village & with the beach directly across the street. Offering 3 bdrms, 4 baths, & over 2,300 sq/ft. The upper level offers a sundrenched living room w/ cedar lined vaulted ceilings, updated gas fp, & a cosy sitting area with large picture windows with partial water views. Includes an updated kitchen w/ pantry. Off this main level is a private patio with lush mature gardens, ideal for summer entertaining & enjoying the peaceful outlook. The entry level offers 3 bdrms incl primary w/ WIC & ensuite. The lower level has a family rm w/ 2-pce bathroom - ideal as an office or studio. Set on a seldom available over 17,000 sq/ft lot steps to the Village.

KEY INFORMATION

MLS® R2698362

Residential Detached

Deep Cove

3 Bedrooms

4 Bathrooms

2,502 SF

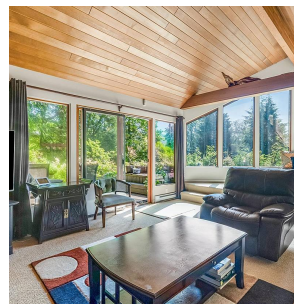
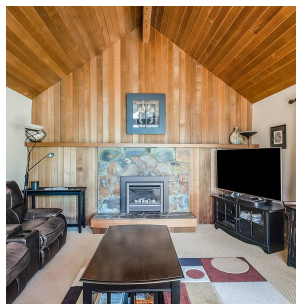
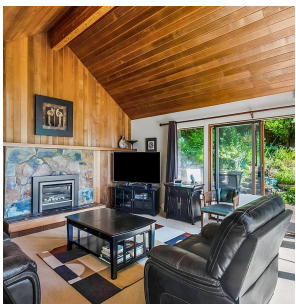
17,460 SF Lot

FEATURES

Year Built: 1927

Views: Forest and harbour views

Listed By: RE/MAX Rossetti Realty



rennie