

15918 102a Avenue, Surrey

\$1,774,999



Gorgeous Fully Renovated 2 story home located in the desirable Guildford Area. Featuring a LARGE living room, & dining room on the main floor. Oversized windows bring in TONS of natural light, making this home bright, open & airy. The kitchen has new granite tops, stainless steel appliances, & a patio leading to your beautiful backyard! Upstairs you will find your 4 large Bedrooms with 3 full bathrooms. Plus 2 suites (2 bed+bachelor) for mortgage helper. Home has a total of 6 bedrooms & 6 baths. Meticulously landscaped LARGE backyard with plenty of space with a covered deck. Close to N.Surrey & Johnston Heights Secondary, William F. Elem. and very close proximity to Highway #1. Don't miss out on your opportunity to view this home. Please call for more information.

KEY INFORMATION

MLS® R2698413

Residential Detached

Guildford

6 Bedrooms

6 Bathrooms

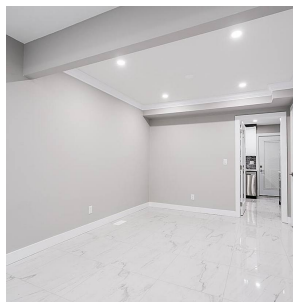
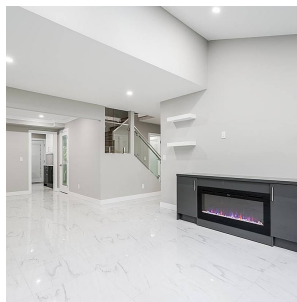
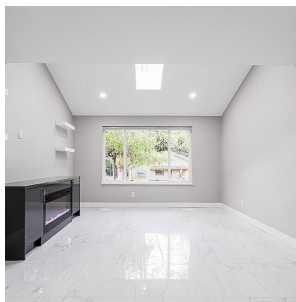
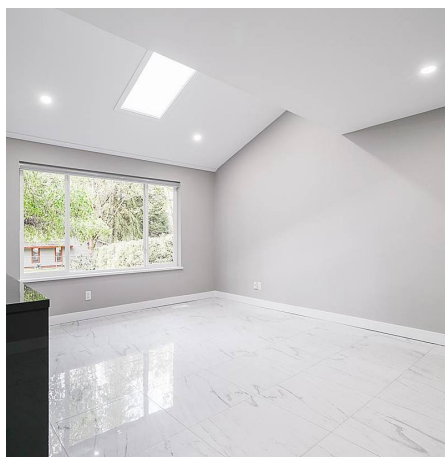
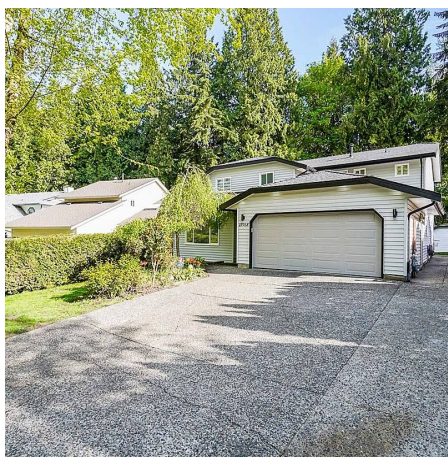
2,482 SF

7,248 SF Lot

FEATURES

Year Built: 1983

Listed By: RE/MAX Treeland Realty



rennie