

9931 149 Street, Surrey

\$1,788,000



Investment Alert! WELCOME TO GUILDFORD. 2885 sqft basement entry house sitting on a 7155 sqft lot. DOUBLE GARAGE with extra parkings. 3 BEDS upstairs with 2 BATHS. Basement has separate entry, and comes with 5 BEDS and 2 full BATHS. BASEMENT POTENTIAL MONTHLY INCOME \$3K+. EXTERIOR RENO, FURNACE, HOT WATER TANK were done 2 years ago. SCHOOLCATCHMENT: JOHNSON HEIGHTS SECONDARY. Steps to the bus stops, parks, shopping centre, TNT supermarket. East access to high way. Don't miss it!

KEY INFORMATION

MLS® R2697888

Residential Detached

Guildford

8 Bedrooms

4 Bathrooms

2,885 SF

7,155 SF Lot

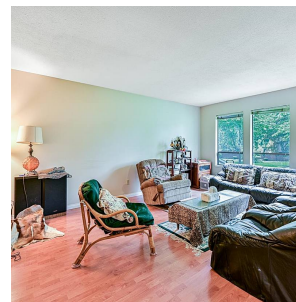
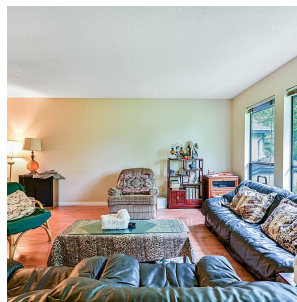
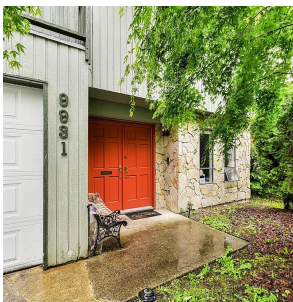


FEATURES

Year Built: 1981

Views: City

Listed By: Laboutique Realty



rennie