

# 312 45598 McIntosh Drive, Chilliwack

\$365,000



Best 2 bed condo in the entire development. Top floor, corner unit facing beautiful mountain views on the quiet south side. Designer inspired renos with all new laminate throughout, refurbished cabinets and vanity, new paint throughout and new countertops. We have in-suite laundry, storage locker available and tons of parking. Rentals are allowed in this well managed building, which has constantly been updated over the past 5 years and still has a healthy contingency fund. Call your agent today to book your private showing of the best unit and location in the building.

## KEY INFORMATION

MLS® R2697272

Residential Attached

Chilliwack

2 Bedrooms

1 Bathroom

923 SF

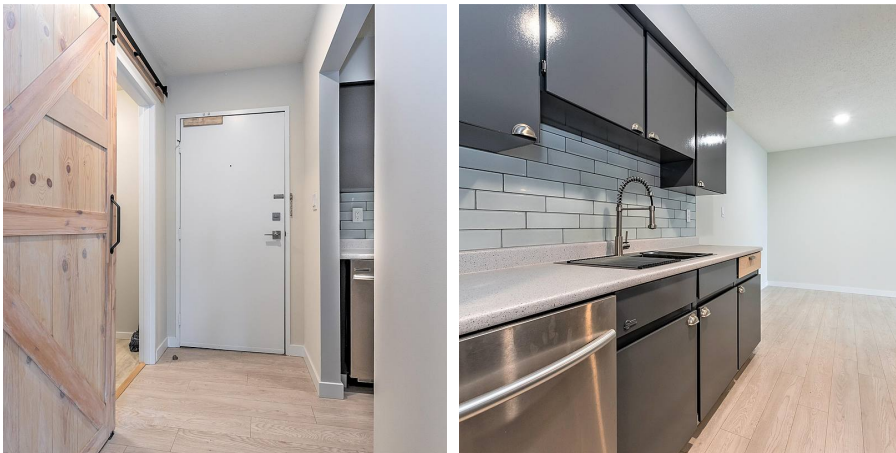
\$433.90 Maintenance Fees

## FEATURES

Year Built: 1981

Views: Mountains

Listed By: eXp Realty (Branch)



rennie