

202 9270 Salish Court, Burnaby

\$550,000



Welcome to The Timbers in Sullivan Heights!
Great opportunity to own this bright and spacious 2 bed, 1 bath corner unit. Huge windows throughout provide a bright and airy feel. Lots of Privacy as you look outside and are surrounded by trees. Laminate flooring throughout, wood cabinets, stainless steel appliances with nothing to do but simply move in and enjoy. This well-maintained building also has lots of upgrades incl. wiring, elevator, repiping, parkade membrane and roof. Strata fees include heat and hot water. 2 small pets allowed. Walking distance to Lougheed skytrain, shopping & Cameron Rec Centre. Close to schools & SFU. Affordable living in a great location!

KEY INFORMATION

MLS® R2698651

Residential Attached

Sullivan Heights

2 Bedrooms

1 Bathroom

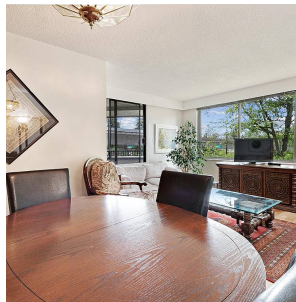
817 SF

\$463.87 Maintenance Fees

FEATURES

Year Built: 1974

Listed By: Pathway Executives Realty Inc.



rennie