

8 8137 164 Street, Surrey

\$1,069,000



FLEETWOOD LIVING IS A NEW COMMUNITY OF 11 TOWNHOMES of 3 BEDROOM HOMES. WITH BEAUTIFUL WIDE OPEN UNITS WITH END APPLIANCES. LOCATED IN QUIET LOCAL COMMUNITY, WALKING DISTANCE TO Walnut Road ELEMENTARY AND Fleetwood Park High School. Walking distance to transit and NEW Sky Train coming soon. Close to ALL SHOPPING, RESTAURANTS AND GROCERY STORES.

KEY INFORMATION

MLS® R2698582

Residential Attached

Fleetwood Tynehead

3 Bedrooms

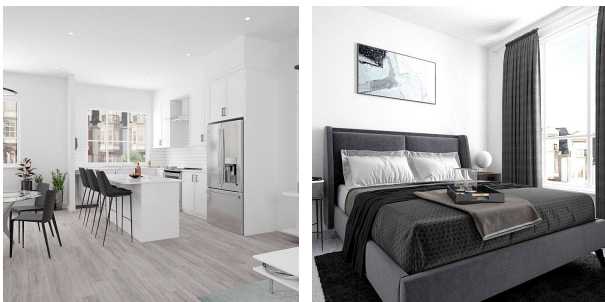
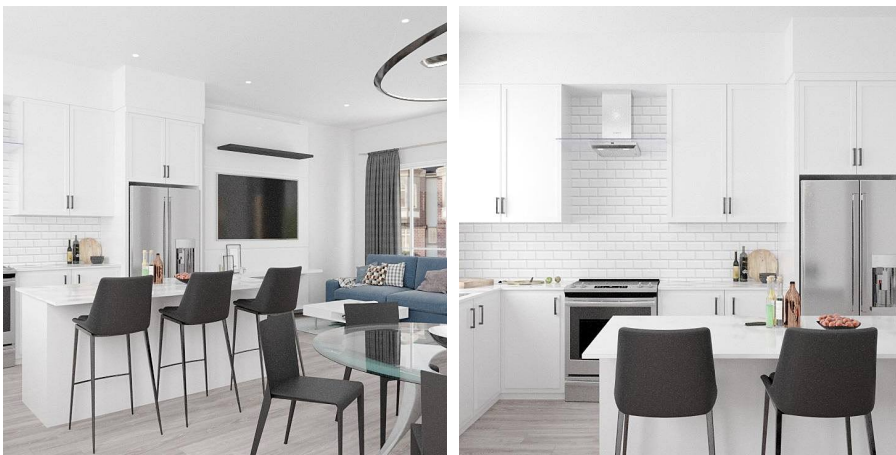
3 Bathrooms

1,358 SF

FEATURES

Year Built: 2022

Listed By: Century 21 Coastal Realty Ltd.



rennie