

3608 657 Whiting Way, Coquitlam

\$788,000



Large 2 bedroom unit perfect for downsizers, young people and young families. There is over 17,000 SF of private amenity space including concierge, sports courts, a fitness center, outdoor swimming pool and rooftop terrace. Minutes walk from Burquitlam station, 30 minutes to downtown Vancouver. Short walk to shopping at Lougheed Centre, Como Lake, golf at Vancouver Golf Club, and Coquitlam College.

KEY INFORMATION

MLS® R2698675

Residential Attached

Coquitlam West

2 Bedrooms

1 Bathroom

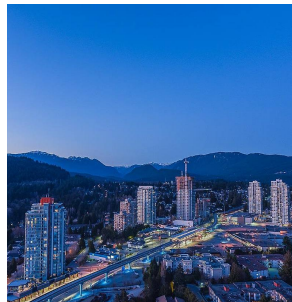
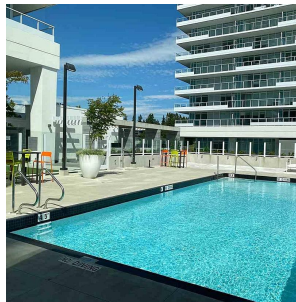
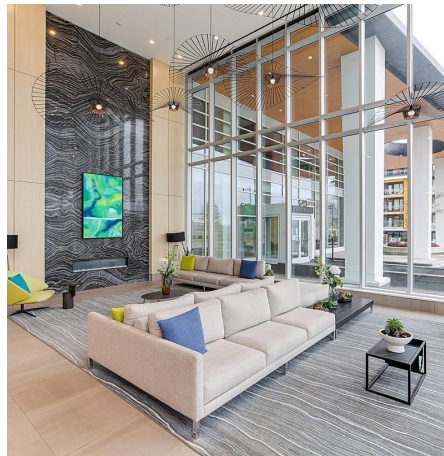
730 SF

\$366.38 Maintenance Fees

FEATURES

Year Built: 2019

Listed By: RE/MAX Crest Realty



rennie