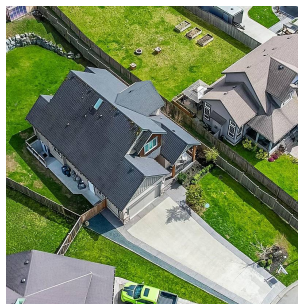
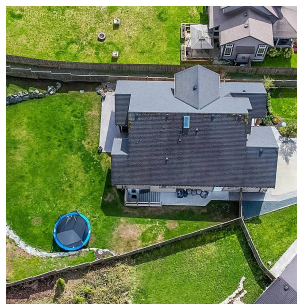


10414 Parkwood Drive, Chilliwack

\$1,299,900



The perfect family home search ends here. Welcome to Woodland Heights! One of Rosedale's most desirable family neighbourhoods. This beautiful home has almost 3500sqft of living space with a spacious 2 bed SUITE w/ separate laundry/ storage room on a 0.27 acre lot. Main floor features an open concept living area w/ a gourmet kitchen, big island, a spacious formal dining room & high ceilings! Master bdrm on main, with ensuite & walk in closet. Upstairs has 2 spare bedrooms for the kids. Did someone say media room or man cave? This one has them both! 2-car garage with extra storage. A large covered patio, overlooking unique terraced back yard perfect for entertaining friends & family anytime of the year. Also has a built in greenhouse. Nice long driveway w/RV parking. Call today!

KEY INFORMATION

MLS® R2698776

Residential Detached

BC

6 Bedrooms

4 Bathrooms

3,447 SF

11,700 SF Lot

FEATURES

Year Built: 2010

Views: mountains

Listed By: HomeLife Advantage Realty Ltd

rennie