

17 17528 60 Avenue, Surrey

\$949,900



Welcome to HEPBURN - an exquisite collection of three and four bedroom homes estimated to complete this year! All homes feature forced-air heating & stainless steel appliances. Nestled in the heart of Cloverdale, you're walking distance to downtown Cloverdale and neighborhood amenities, close to highway 15 for quick access to both City, Valley and Beach.

KEY INFORMATION

MLS® R2699041

Residential Attached

Cloverdale

3 Bedrooms

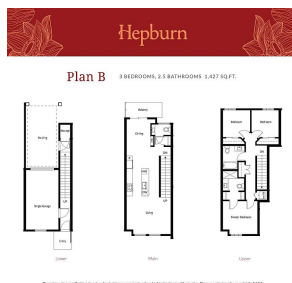
3 Bathrooms

1,427 SF

FEATURES

Year Built: 2022

Listed By: AXIS Real Estate Solutions Inc.



rennie