

208 3178 Dayanee Springs Boulevard, Coquitlam

\$668,000



Situated at the base of Westwood Plateau, Tamarack by Polygon is a sought after master planned community of Dayanee Springs. This unit showcases modern Whistler- inspired architecture featuring heavy timber details, cultured stone and cedar shingle accent features. Large open floor plan with laminate wood flooring, gourmet kitchen with stainless steel appliances and granite counter tops. BONUS oversized 458 sq.ft balcony with MOUNTAIN VIEWS. Tamarack is conveniently located to the NEW SKYTRAIN STATION, local trails, Douglas College, Pinetree High School, shopping & dining at Coquitlam Centre.

KEY INFORMATION

MLS® R2699275

Residential Attached

Westwood Plateau

2 Bedrooms

2 Bathrooms

850 SF

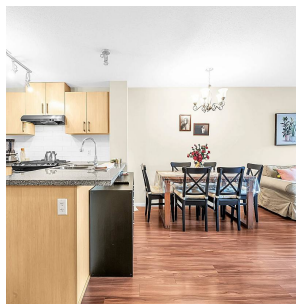
\$352.13 Maintenance Fees

FEATURES

Year Built: 2013

Views: Mountain views

Listed By: Sutton Group - 1st West Realty



rennie