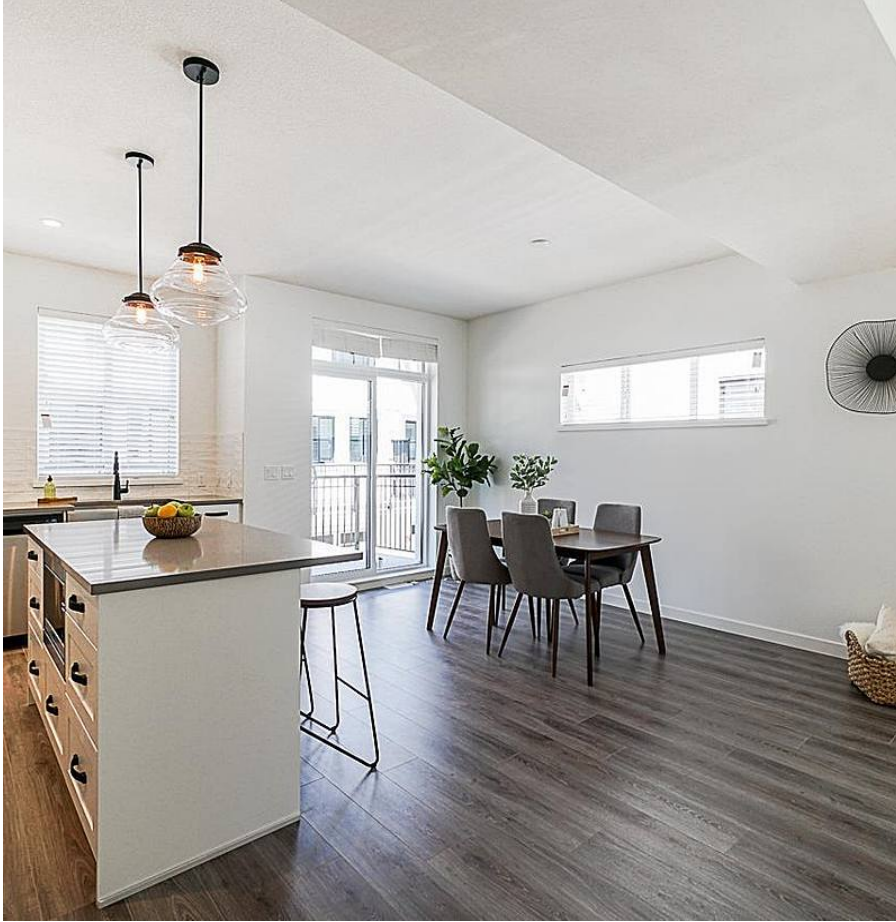


# 51 5945 176a Street Street, Surrey

\$889,000



Beautiful design with an incredibly functional floor plan located at Crimson in Cloverdale. Placing you within walking distances to Cloverdale Rec., Brickyard Station Shopping, Athletic & Millennium Parks, both levels of school (MARTHA CURRIE and LORD TWEEDSMUIR) which also offer french immersion programs. This 3 bed + Den home comes complete with FORCED AIR HEATING, a chef's kitchen inc. GAS range, large island w/breakfast bar & built-in microwave in a spacious open concept floor plan that also has DOUBLE side-by-side parking in garage. Don't miss this one! Open house cancelled

## KEY INFORMATION

MLS® R2699176

Residential Attached

Cloverdale

3 Bedrooms

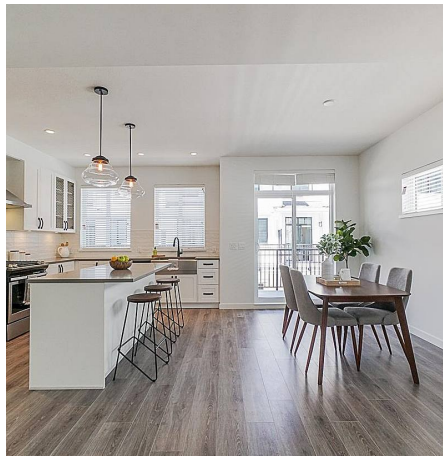
3 Bathrooms

1,446 SF

## FEATURES

Year Built: 2019

Listed By: RE/MAX Performance Realty



rennie