

50 1207 Confederation Drive, Port Coquitlam

\$928,000



Highly desirable Citadel Heights! - A perfectly laid out 3 bedroom, 2.5 bathroom townhome on the quiet, landscaped side. Featuring over 1570+ Sq ft of living space over two levels, you'll love the extra storage and DOUBLE CAR garage. Original condition, yet kept immaculately - Bring your designer ideas and transform this beauty into a masterpiece. French doors lead to the back patio oasis with french doors. 3 spacious bedrooms UP, convenient powder room on the main floor. Walking distance to Castle Park elementary, Citadel Middle and Hazel Trembath Elementary, easy access to Mary hill Bypass. Walkers paradise, great proactive strata. Easy to show!

KEY INFORMATION

MLS® R2699500

Residential Attached

Citadel

3 Bedrooms

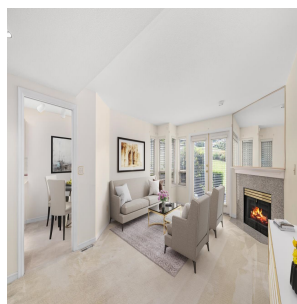
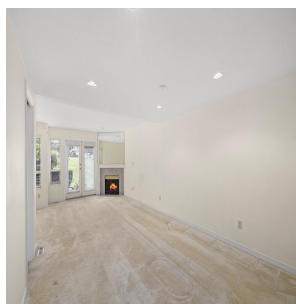
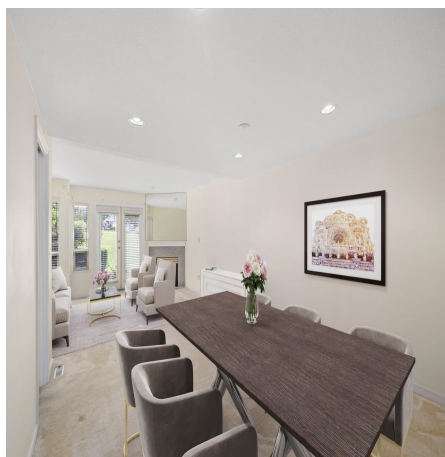
3 Bathrooms

1,577 SF

FEATURES

Year Built: 1990

Listed By: Engel & Volkers Vancouver



rennie