

1202 668 Citadel Parade, Vancouver

\$935,888



Spectrum 2, constructed by the prestigious Concord Pacific located in downtown Vancouver. This bright and airy 2 bedroom, 2 bathroom home features floor to ceiling windows with surrounding city views, open concept kitchen with breakfast bar, spacious living & dining and includes a solarium that can be used as an office with picturesque mountain and ocean views. The master bedroom includes a sizeable en suite with scenic city views. Spectrum residents have access to concierge service and Club Ozone - 80 ft indoor pool, whirlpool, steam room, sauna, fully equipped gym, theatre, social lounge with kitchen and meeting room. Perfectly situated, its steps away from BC Place, Rogers Arena, skytrain station, restaurants, shopping and so much more! This is a home you DON'T WANT TO MISS!

KEY INFORMATION

MLS® R2698489

Residential Attached

Downtown

2 Bedrooms

2 Bathrooms

968 SF

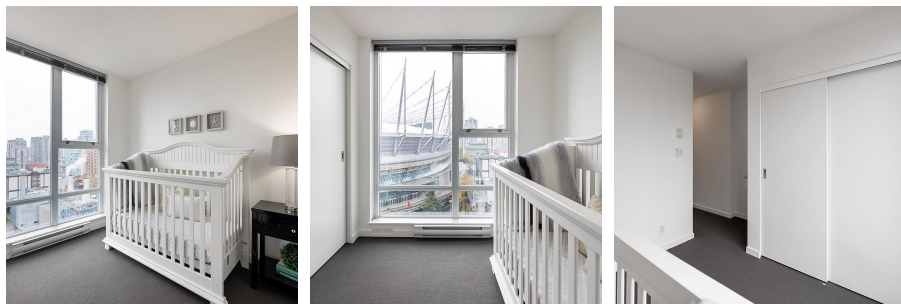
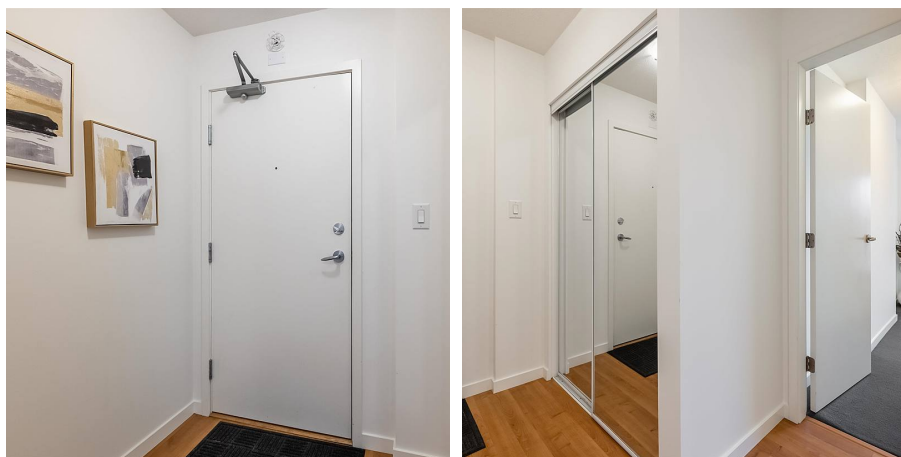
\$548.38 Maintenance Fees

FEATURES

Year Built: 2007

Views: City & Ocean & Mountains

Listed By: Royal LePage - Wolstencroft



rennie