

# 602 9373 Hemlock Drive, Richmond

\$569,000



MANDALAY by CRESSEY. This spacious one-bedroom penthouse unit is conveniently located at Garden City & Westminster Hwy area and comes with 1 parking and 1 storage. Close by Richmond Centre, Lansdown Centre and Canada Line. Surrounded by 3 parks with 6600 sqft luxurious amenities including a clubhouse, exercise room and indoor swimming pool, steam room and outdoor barbecue area for family gatherings and parties, this well maintained complex also offers a bike room, EV charging stations and ample visitor parking. The unit also comes with all stainless steel appliances, a granite countertop and an electric fireplace. Parking spot and locker room close to the elevator! Don't miss out!

## KEY INFORMATION

MLS® R2699599

Residential Attached

Mc Lennan North

1 Bedroom

1 Bathroom

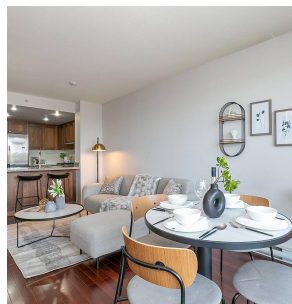
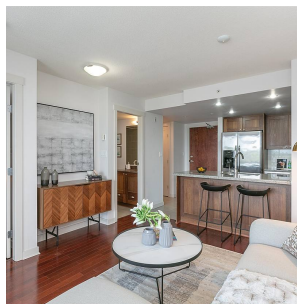
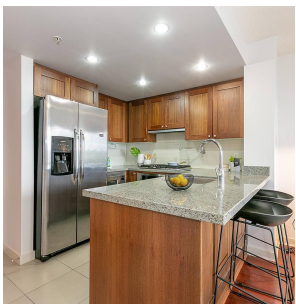
562 SF

\$284.77 Maintenance Fees

## FEATURES

Year Built: 2009

Listed By: Ohmproperty



rennie