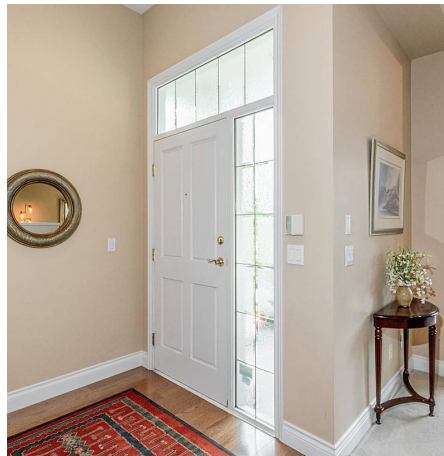


72 3355 Morgan Creek Way, Surrey

\$1,899,000



DEER RUN ON THE GOLF COURSE! This is the ONE you have been SEARCHING FOR! One of the largest units in Deer Run over 4300 SF with one of the BEST LAYOUTS & VIEWS. Large open updated KITCHEN and FAMILY ROOM with high VAULTED CEILING 3 way gas fireplace and AMAZING WEST FACING VIEWS OF THE 10Th FAIRWAY. This unit is perfectly situated far enough from the tee box and far enough from 32nd Ave making it VERY QUIET. The top floor MASTER BEDROOM SUITE with TERRIFIC GOLF COURSE VIEWS also features a large spa-like ensuite and spacious walk-in closet. TRULY ONE OF DEER RUNS FINEST HOMES!! ACT FAST!

KEY INFORMATION

MLS® R2699592

Residential Attached

Morgan Creek

3 Bedrooms

3 Bathrooms

4,369 SF

FEATURES

Year Built: 1999

Views: Golf Course-10th Fairway

Listed By: RE/MAX Colonial Pacific Realty

rennie