

46535 Clayton Avenue, Chilliwack

\$899,900



Cute rancher, with basement, located close to all amenities in Chilliwack. This is a classic home with original hardwood oak floors with walnut inlay, has 4 bedrooms (potentially 5), with lots of room for you to grow into or share with others. This home has lots of natural light and large rooms. There are 2 brick fireplaces located up and down. The windows, hot water tank and roof were replaced in 2013. Private, fully fenced, back yard with front and rear patios give space for your activities and there also is a detached garage/workshop, custom tree house with fireman's pole.

KEY INFORMATION

MLS® R2699779

Residential Detached

Chilliwack

4 Bedrooms

2 Bathrooms

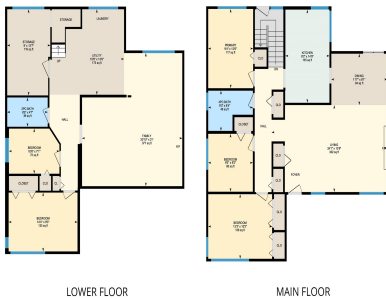
2,460 SF

6,000 SF Lot

FEATURES

Year Built: 9999

Listed By: RE/MAX Nyda Realty Inc.



46535 Clayton Ave - Chilliwack, BC

LOWER FLOOR: 1,140 SQFT MAIN FLOOR: 1,222
TOTAL: 2,362 SQFT



rennie