

# 216 19945 Brydon Crescent, Langley

\$624,999



ATRIUM. Second Floor 2 beds 2 baths, with BEST LAYOUT and 1-parking stall and 1-storage locker. Both bedrooms are private separated by living room. Atrium is a 4-storey new development featuring a total of 77 units in the City of Langley. These new residences express the heritage of Langley by Creating homes that are warm and inviting for its residents while still maintaining modern and sleek West Coast exterior design. These upscale condos are functional and offer a number of amenities, such as entertainment space with a kitchen, an outdoor play area, gym and much more! Act Fast.

## KEY INFORMATION

MLS® R2699506

Residential Attached

Langley City

2 Bedrooms

2 Bathrooms

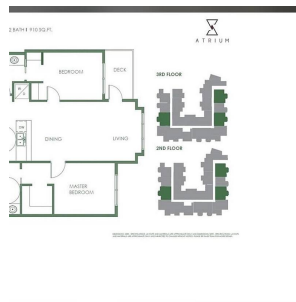
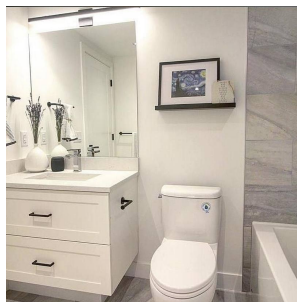
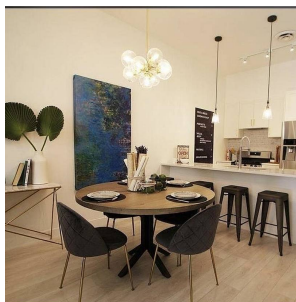
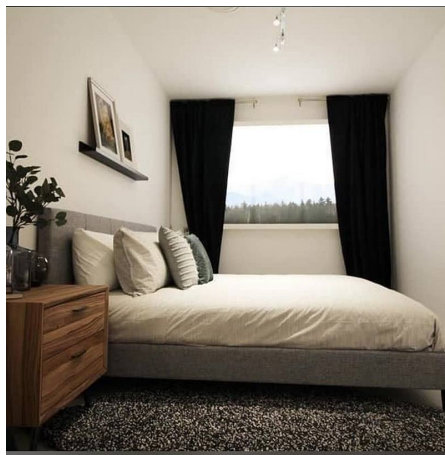
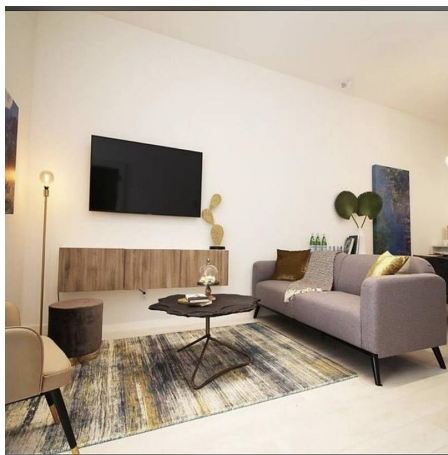
910 SF

\$329.79 Maintenance Fees

## FEATURES

Year Built: 2022

Listed By: Royal LePage Global Force Realty



rennie