

906 2041 Bellwood Avenue, Burnaby

\$599,000



Spacious, Bright, and well kept! Welcome to Anola Place by Bosa. This well laid out 2 bedroom corner unit is perfect if you are looking for a home with a great and open view, large spacious bedrooms and living space, and that is in move in ready condition! There are 2 spacious balconies for outdoor enjoyment. This one is worth seeing! Call today for a private viewing. See you soon!

KEY INFORMATION

MLS® R2700122

Residential Attached

Brentwood Park

2 Bedrooms

1 Bathroom

912 SF

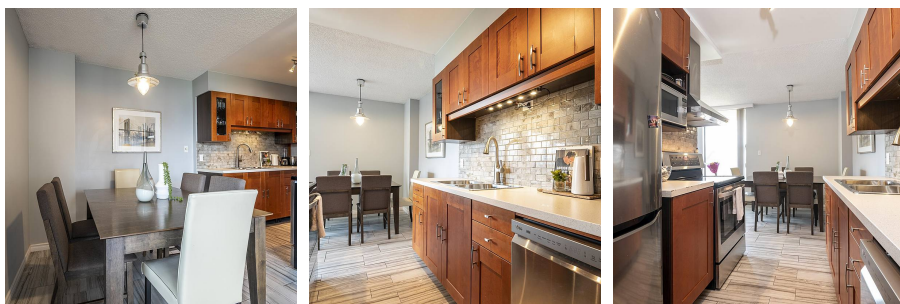
\$450.52 Maintenance Fees

FEATURES

Year Built: 1986

Views: Metrotown and Eastern views

Listed By: Sotheby's International Realty Canada



rennie