

# 110 5415 Brydon Crescent, Langley

\$629,000



Welcome to THE AUDLEY! A beautiful west coast style condominium built by Reddale. This two-bedroom/two-bath ground floor home overlooks a beautiful greenbelt featuring, Fisher & Paykel fridge, Samsung 5 burner gas range, frameless glass shower and quartz counters throughout the unit. The layout features a massive walk-in closet, leading into a dual vanity sink in the primary ensuite. Energy-efficient windows & glass doors. Entertain in style in the stunning landscaped courtyard feat: BBQ area, fire-pit, seating, children's play area and garden. Over 3,100 sq. ft. of amenities incl: Fully equipped workout facility, yoga/meditation room, exec. boardroom, library/social room, study/quiet room, guest suite, workshop, dog wash, bike storage and only minutes walk from the future skytrain.

## KEY INFORMATION

MLS® R2699738

Residential Attached

Langley City

2 Bedrooms

2 Bathrooms

864 SF

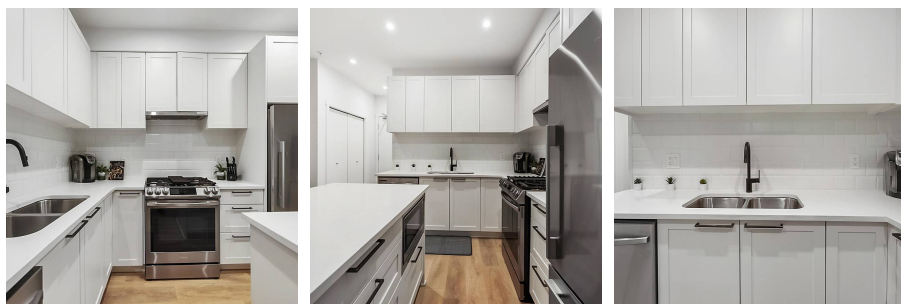
\$230.00 Maintenance Fees

## FEATURES

Year Built: 2021

Views: Ravine

Listed By: Royal LePage - Wolstencroft



rennie